



# Sai Wan Ho Civic Centre – Theatre

## FULL Technical Information

V. 2020.09.01

Page 1 of 7

### Performing Arts Division – Technical Support Section

**Sai Wan Ho Civic Centre**  
111 Shau Kei Wan Road  
Sai Wan Ho, H.K.  
Phone  
852-3184 5757  
Fax  
852-2904 6297

### CONTACTS

**Iris Lam**  
Senior Manager (HKE)  
Direct Line  
852- 3184 5733

**Ruby Ho**  
Manager (SWH)  
Direct Line  
852- 3184 5738  
Fax Line  
852- 2567 4041

**Sheila Tsang**  
Resident Technical  
Manager (HK)  
Direct Line  
852- 2853 0730 (SWCC) /  
3184 5737 (SWHCC)  
Fax Line  
852- 2850 6250

### GENERAL SET-UP

*The Theatre operates on a 'bare-walls' touring policy. That is, all equipment is normally set-up and struck within the booking period. Hires are reminded to allow sufficient preparation time to hang theatre masking, rig all overhead stage lighting and set up sound system.*

*Check with our Technical Manager for any other equipment and technical enquiry.*



The Sai Wan Ho Civic Centre Theatre is a traditional proscenium theatre designed and fully equipped to Concert, Drama, Dance, Chinese Opera, Lecture, Film projection, and Variety performances.

### DIRECTIONS

**MTR:**  
Island Line, Sai Wan Ho Station, Exit B

**Freeway:**  
Island Eastern Corridor (From Causeway Bay) → Turn right to Tai On Street → Turn left to Shau Kei Wan Road → Turn left to Holy Cross Path

**Freeway (From Island East):**  
Shau Kei Wan Road (From Chai Wan) → Turn left to Tai Ning Street → Turn right to Sai Wan Ho Road → Turn right to Tai Lok Street → Turn right to Shau Kei Wan Road → Turn left to Holy Cross Path



### LOADING

Loading dock shared with the Municipal Complex

Dock Height : 1.24m

Cargo lift:  
5.38 x 1.90 x 2.40m  
(W x D x H)

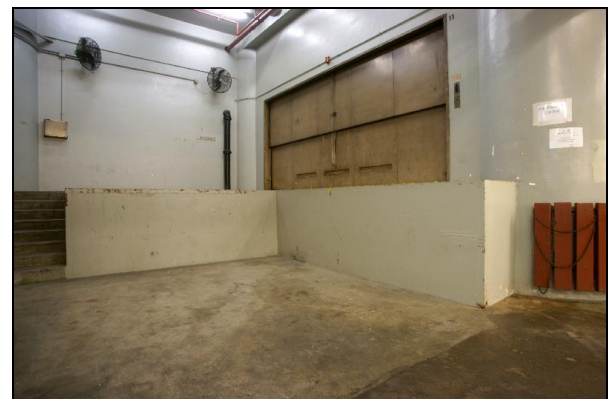
Capacity:  
1350kg (goods loading only)

### STAGE ENTRANCE

From Venue Foyer by the lift behind ticketing booth, passenger lift to 1/F.

### PARKING

Nil





**AUDITORIUM**



**Total Seating:482**

**PROSCENIUM**

Frame dimension with false proscenium side panels 10.03 - 5.05m (W x H)  
Frame dimension without false proscenium side panels 13.00 - 5.05m (W x H)

**STAGE WIDTH**

Stage right wall to stage left wall 32.34m  
Centreline to stage right rolling gate 15.86m  
Centreline to stage left wall 16.48m  
Between fly galleries 13.74m  
Centreline to stage right 8.34m  
Centreline to stage left 8.34m

**STAGE DEPTH**

Rear of Proscenium to rear-stage back wall 11.66m  
Rear of Proscenium to forestage edge 1.27m

**STAGE HEIGHT**

Clearance under grid 12.90m  
Maximum counterweight bar flying height 11.55-12.00m  
Clearance under fly galleries (fixed ladders) 5.55m (SL) – 5.53m (SR)  
Above Auditorium 1.07m

**FORESTAGE / ORCHESTRA PIT**

Not available

**STAGE FLOOR**

Flat black surface hardboard  
31 trapdoors at US from CS to side SR 30 units (WxL) 0.55 x 1.4m  
1 unit (WxL) 0.35 x 1.4m

**SIDE STAGE**

Stage Right 6.50 x 5.70m (W x D)  
Stage Left 6.50 x 5.70m (W x D)

**The fire shutter is treated as a safety curtain by FSD and cannot be obstructed by scenery, equipment or stage wagon in production.**

**REAR STAGE**

Not available

**STORAGE SPACE**

SR scene dock 6.50 x 5.00m (W x D)



**CROSSOVER**

Corridor under auditorium at stage level

**RIGGING**

House Curtain (Red)	Variable speed electric
Stage Lighting Bar	Fixed speed electric
Double purchase counterweights	18
Bar diameter (generally)	49mm
Bars distance (generally)	0.20m
Capacity (generally)	250kg SWL
Bar length	13.20 m

**Rigging System**

- Bar 1 carries the safety curtain
- Bar 2 carries red house border
- Bar 3 carries red house curtain
- Bar 8, 10, 23 carries the border
- Bar 9, 12, 20, 25 carries the leg
- Bar 5, 11, 15, 19, 22, 24, 28 are the lighting bar
- Bar 10 carries the cinema screen
- Bar 17 carries the mid curtain
- Bar 27 carries the rear curtain
- Bar 24 carries the cyclorama lighting bar
- Bar 31 carries back projection screen
- Grid Floor Capacity

250kg/m<sup>2</sup> SWL

**STAGE EQUIPMENT**

**Stage Drapery**

Black masking	legs	8	flat	2.50 x 5.50m	(W x H)
	borders	4	flat	13.00 x 2.50m	
	half tabs	4	flat	7.00 x 5.50m	
	tab	1	flat	14.00 x 6.00m	
Red House curtain (Motorized)		1		7.00 x 5.50m	General rig
Flat white back projection screen		1	flat	12.60 x 6.00m	

**Orchestra Riser**

Aluminum frame platform with wooden surface. Guard rails available. No drilling or painting.

1.83 x 1.22m (W x L)	203mm(H) x 4
	407mm(H) x 4
	610mm(H) x 4

Wenger portmaster

**Choir Riser (3 steps)**

3 step choir risers for approx. 60 persons.

Wenger tourmaster

**Acoustic Shell**

1 set of Acoustic Shell Panel

Wenger legacy

**Dancing Tile**

for dance show only

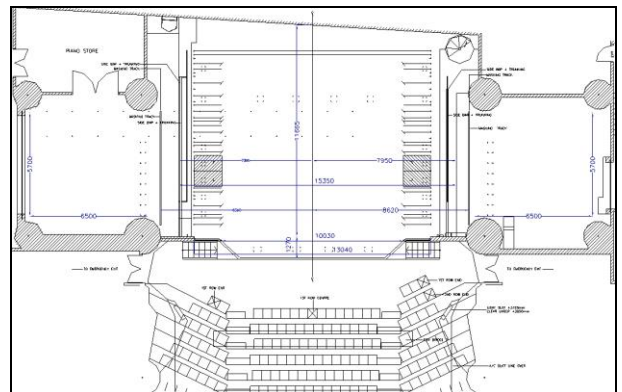
Black /grey reversible for forestage edge to Cyc  
(Please allow time to lay the tiles during booking time)  
13.00 x 2.00m x 6

**Carpet**

2 (for Cantonese Opera and Operatic Songs concerts only)  
4.50 x 7.00m (W x D)

**Instrument**

9 ft Concert Grand Piano	1	Kawai (Incur extra charge)
Timpani	1 set	20", 23", 26", 29"





**Lift and Ladder**

Platform fiberglass ladder	1	3.00m Height
Cougar lifts (Max. 7.2m H)	1	<i>operated by competent person &amp; prior approved by venue management only</i>
BilJax tom. C.A.T.-24		

**DRESSING ROOM**

Stage level	<b>No. 1:</b> SR for 19 seats
	<b>No. 2:</b> SR for 12 seats
	<b>No. 3:</b> SR for 12 seats
	<b>No. 4:</b> SL for 9 seats

All dressing rooms fitted with private toilet and shower

**RUNNING WARDROBE**

Steamers, Irons & boards can be loaned from Resident Stage Management office.



**LIGHTING**

**Dimmer** Total 188 nos. including 176 nos. of 3.3kW; 12 nos. of 5.5kW locating in Dimmer Room at side stage left

**Control Board** ETC Gio 2000 with full backup control facilities, located in Lighting Control Room at the back of auditorium.

**Houselight** Dimmer controlled. Take-control available in Lighting Control Room.

**Circuit** 176 x 3.3kW and 12 x 5.5kW production lighting circuits, fixed wiring type, all circuits are terminated to 15A socket outlets to UK standard respectively on the production lighting boxes, distributed at various locations throughout the stage and lighting bridges.

**Additional Power** 100Amp 3-phase (include 1 nos. of 32Amp 3-phase socket and 1 nos. of 32Amp single phase socket), located at Up Stage Left wall with 100 clamping busbar for temporary cable connection.

**Connection must be conducted by a local registered electrical worker.**

**Hirer shall supply adequate circuit protective devices for all bring in electrical installation.**

**13A wall-mounted socket outlets at UK standard are provided on the stage.**

**Front of House Position** FOH Lighting Bridge no.1, 8.40m throw at 39 degree  
FOH Lighting Bridge no.2, 11.05m throw at 28 degree

<b>Profile</b>	750W	ETC	Source 4 15/30	85	
	750W	ETC	Source 4 25/50	26	(Pool)
<b>Fresnel</b>	1kW	Selecon	Rama 150	48	
	1.2kW	Strand	Canatata F	16	
<b>Beamlight</b>	575W	ETC	Source 4 PAR	28	
	750W	ETC	Source 4 PARNeI	36	
	1000W	Kupo	PAR64	10	CP60 / CP61
<b>Cyclorama light</b>	1.25kW	Selecon	Aurora-10 AUCYC4L	4	Top (Bar 24)
<b>Ground Row</b>	625W	Selecon	Aurora-GR-4-way Linear	6	Bottom
<b>Follow Spot</b>	1800 W	Robert Juliat	Victor-1159	2	Auditorium back (Projection room)



<b>Effects Projection</b>	2.5kW	VSF3V3		4	
	Effects		Fleecy Cloud	2	
			Storm Cloud	1	
			Rain	1	
			Snow	1	
			Fire	2	
			Running Water	2	
<b>Animation Projection</b>	750W	ETC	Source 4 25/50	4	
	Effect	Disc	Water	2	
			Fire	2	
			Cloud	2	
<b>Smoke generator</b>		Martin	Jem ZR44	1	
	1300W	Look Solutions	Viper NT	2	
<b>Strobe Light</b>	3kW	Martin	Atomic 3000	2	
	1.5kW	J. Collyns	Foudre II	4	
<b>UV light</b>	400W	Griven	Wood	4	
<b>Colour Scroller</b>		Rainbow	8" PRO2	8	
<b>Other</b>	Side light towers		530 x 730 x 1860 mm (W x D x H), 4-tier	6	
	DMX Ports		Electrical Bar	7	(1 on @ bar)
			Lighting Side Stage	4	(1 on @ side)
			Auditorium Row-T	1	
	Light Stands			8	(Pool)

Supply of above equipment subject to availability on receipt of a lighting plan.

Equipment availability does vary slightly according to equipment conditions and maintenance. Check with Technical Manager for any updates.

**Hirer will be provided with basic lighting only, from available hung equipment, if technical preparation time is less than 2 hours in the booking.**

All brought-in "Electrical and Stage Lighting Equipment" to be used in LCSD PA venues, shall meet the requirements of "Code of Practice for Electricity (Wiring) Regulations (2009 Edition)". Please contact the venue management for any electrical safety concern. Website reference:

[http://www.emsd.gov.hk/emsd/eng/welcome/em\\_safety.shtml](http://www.emsd.gov.hk/emsd/eng/welcome/em_safety.shtml)

### **SOUND**

<b>Sound System</b>	d&b Ti10L Line Array (centre cluster)	Set of 4
	d&b E12, (sides of proscenium)	4
	d&b Qi-Sub (Subwoofer)	2
	d&b E6 (stage front fill)	5

**Main Control Console** DiGiCo SD8-24 mixing console with 24 mono inputs, and 8 outputs in sound control room at the back of auditorium



<b>Microphone tie line</b>	Each side of stage	16 (SL), 16 (SR)
	Forestage	7
<b>Accessory Electronic</b> <b>(Pre-aligned, not loose equipment)</b>	T.C. Electronic M2000 digital effects processor	1
	Eventide Eclipse V4 digital effects processor	1
<b>Wireless Microphone</b>	Sennheiser UHF SKM 5200-II hand-held type	8
	Sennheiser UHF SK5212-II body-pack type	8
	<b>Max. 8 units with a minimum booking of 2 sessions (Incur extra charge)</b>	
<b>Stage Monitor</b>	Meyer Sound UPJ-1P	5
	Meyer Sound UPM-2P	4
	d&b E8	4
<b>CD player</b>	Denon DN-C635	2
<b>Mini-Disc recorder</b>	Tascam MD-801RMKII	1
	Tascam MD-CD1MKIII	1
<b>Multi-media Projector</b>	Panasonic PT-DZ870 (with ET-DLE250 Lens)	1
	MITSUBISHI FD630U (with Standard Lens)	1
<b>Video Presenter</b>	Yokogawa MC-8	1
<b>Portable Cinema Screen</b>	2.44 x 2.44m (W x H)	1
	1.78 x 1.78m (W x H)	1

### **LED SURTITLE DISPLAY SYSTEM**

Horizontal LED Display Boards (Incur extra charge)	3 sets
Default Font Color	White
Options for Set up ( select 1 out of 3)	(English and/or Chinese Version)
Option 1 :	1 piece of horizontal display board rigging up on bar above the stage
Option 2 :	2 pieces of horizontal display board fixedly installed at the left and right sides of the proscenium.
Option 3:	2 pieces of horizontal display board fixedly installed at the left and right sides of the proscenium and 1 piece of horizontal display board rigging up on bar above the stage

Size of LED board : 153.6 x 57.6 x 7.5cm (W x H x D)

Surtile input file: accept only Microsoft® Word (\*.doc or .docx) file format. The wordings as seen on the display board will be the same as in the file.

The control monitor can be set at side stage left. Displays on ALL boards will be identical. LED board is set up within booking period when two sessions or more are booked. Setup time normally requires one hour.

### **COMMUNICATION**

Stage manager desk located at stage left  
Two channels intercom system for stage, lighting and sound  
Paging and show relay system  
Close Circuit TV system  
Production desk can be set at the middle of the auditorium upon request



**ADDITIONAL FACILITY**

Flown Cinema Screen	Bar 10
Strong Super 80 35mm film projectors	2
Eiki EX-9100 16mm film projectors	2

**Prior to booking date, please confirm with Technical Manager for the availability of the equipment. All required equipment will be set-up during the booking sessions; please allow adequate time for equipment set-up before performance or rehearsal**