



Performing Arts
Division –
Technical Support
Section

Sai Wan Ho Civic Centre
111 Shau Kei Wan Road
Sai Wan Ho, H.K.
Phone
852-3184 5757
Fax
852-2904 6297

CONTACTS

Iris Lam
Senior Manager (HKE)
Direct Line
852- 3184 5733

Ruby Ho
Manager (SWH)
Direct Line
852- 3184 5738
Fax Line
852- 2567 4041

Sheila Tsang
Resident Technical
Manager (HK)
Direct Line
852- 2853 0730 (SWCC) /
3184 5737 (SWHCC)
Fax Line
852- 2850 6250

GENERAL SET-UP

The Cultural Activities Hall operates on a 'bare-walls' touring policy. That is, all equipment is normally set-up and struck within the booking period. Hires are reminded to allow sufficient preparation time to hang theatre masking, rig all overhead stage lighting and set up sound system. Check with our Technical Manager for any other equipment and technical enquiry.

Sai Wan Ho Civic Centre – Cultural Activities Hall
FULL Technical Information

V. 2020.09.01

Page 1 of 4



The Sai Wan Ho Civic Centre Cultural Activities Hall is a multi purpose room for lecture, seminar, meetings, exhibition, rehearsal and simple setting performances.

DIRECTIONS

MTR:
Island Line, Sai Wan Ho Station, Exit B

Freeway:
Island Eastern Corridor (From Causeway Bay) → Turn right to Tai On Street → Turn left to Shau Kei Wan Road → Turn left to Holy Cross Path

Freeway (From Island East):
Shau Kei Wan Road (From Chai Wan) → Turn left to Tai Ning Street → Turn right to Sai Wan Ho Road → Turn right to Tai Lok Street → Turn right to Shau Kei Wan Road → Turn left to Holy Cross Path



LOADING

Loading dock shared with the Municipal Complex

Dock Height: 1.24m

Cargo lift (Accessible only through the market):
5.38 x 1.90 x 2.40m (W x D x H)
Capacity:
1350kg (goods loading only)

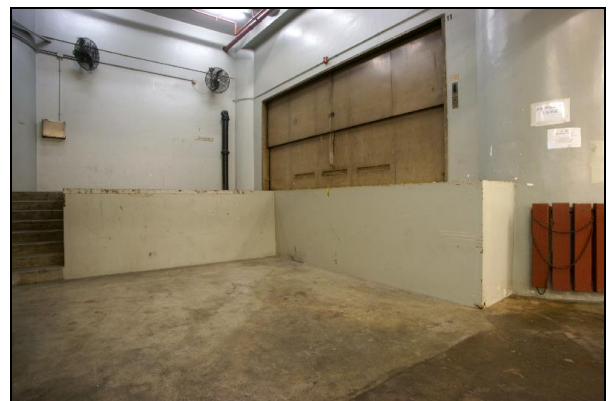
Stage Entrance door size:
1.50 x 2.35 m (W x H)

STAGE ENTRANCE

From Venue Foyer by the lift behind ticketing booth.

PARKING

Nil





AUDITORIUM



Total Seating:

110 in total (movable seats) for standard End Stage setting

OR

100 in total (movable seats) for standard Thrust Stage setting

ROOM SPACE

Width	12.86m
Depth	17.65m
Height	4.58m
Clearance under truss	3.86m

FLYING SYSTEM

Not available

STAGE FLOOR

Brown Surface Sprung Flooring

STORAGE AREA

Limited space

STAGE EQUIPMENT

Full length mirrors on the walls

Dance bars on the wall

Exhibition panels

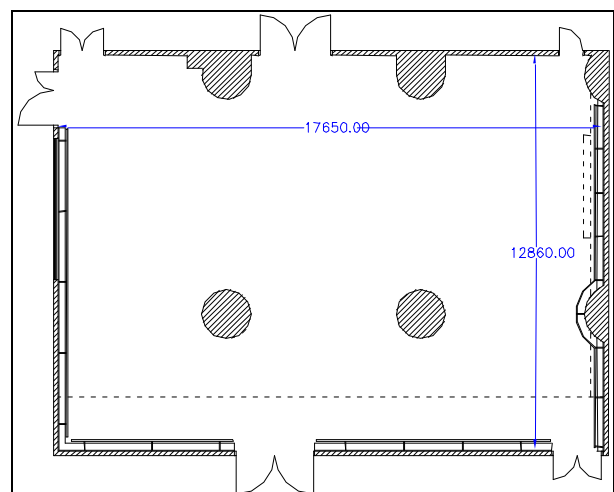
1.00 x 2.00m (W x H) 30

Stage risers (Not suitable for dance program)

1.83 x 1.22m (W x L) 400mm(H) x 10

End Stage Layout OR 6 or 10 units

Thrust Stage Layout 6 units only



Instrument

Kawai Up Right Piano 1
(Only preset on stage floor)

DRESSING ROOM

Stage level 1 room for 10 seats

Dressing rooms fitted with private toilet and shower





LIGHTING

Dimmer	44 nos. of 3kW; ETC HD15 Module locating at Lighting Control Room.			
Control Board	ETC Ion Xe Control Console, located in Lighting Control Room at the back of hall.			
Houselight	Dimmer controlled. Controlled independently or via lighting control board.			
Circuit	120 x 15A socket outlets to UK standard respectively, distributed at various locations throughout the truss.			
Profile	575W	ETC	Source 4 Jr. Zoom 25/50	38
Fresnel	650W	Selecon	Acclaim 6/60	38
Beamlight	1kW	Kupo	Par-64-SB, CP61	8
Strobe Light	3kW	Martin	Atomic 3000	1
Other	Light Stand			2
	DMX Ports (2 in truss, 1 on multi-core panel)			3
	Exhibition Spotlights (for exhibition only)			35

Supply of above equipment subject to availability on receipt of a lighting plan.

Equipment availability does vary slightly according to equipment conditions and maintenance. Check with Technical Manager for any updates.

Hirer will be provided with basic lighting only, from available hung equipment, if technical preparation time is less than 2 hours in the booking.

All brought-in “Electrical and Stage Lighting Equipment” to be used in LCSD PA venues, shall meet the requirements of “Code of Practice for Electricity (Wiring) Regulations (2009 Edition)”. Please contact the venue management for any electrical safety concern. Website reference:

http://www.emsd.gov.hk/emsd/eng/welcome/em_safety.shtml

SOUND

Sound System	d&b E12 End Stage Main PA Speaker	2
	d&b E12 Thrust Stage Main PA Speaker	3
	(Match with Stage Layout, choose either one system)	
	Altec 920-8A (Ceiling speakers)	12
Main Control Console	Soundcraft Si Performer 1 Sound Console, located in Audio Control Room at the back of hall	
Audio tie line	Mic/line channels to Audio Control Room	6 max.
Microphone	Shure SM 58	5
	Shure SM 57	3
	Shure 565SD	2
	Neumann KM 184	1
Wireless Microphone	Sennheiser UHF wireless mic system	2 sets
	Including : Handheld – SKM 2000	2
	Bodypack – SK 2000 with Mic Head	2
	Max. 2 units	
	(Incur extra charge)	
CD Player	Denon DN-C630	2
Mini-Disc Recorder	Tascam MD-CD1MKIII	2
Multi-media Projector	SANYO PLC-XU106 (Incur extra charges)	1



Portable Cinema Screen	Portable tripod screen	
	1.78 x 1.78m (W x H)	1
	2.44 x 2.44m (W x H)	1

COMMUNICATION

Single channel intercom system for stage, lighting and sound
Paging and show relay system
Close Circuit TV system

ADDITIONAL FACILITY

Electric roller screen 4.57 x 3.2m (W x H), only suitable for end stage layout	1
Eiki EX-3500A – Portable 16mm film projector	1

**Prior to booking date, please confirm with Technical Manager for the availability of the equipment.
All required equipment will be set-up during the booking sessions; please allow adequate time for equipment set-up before performance or rehearsal**