



Hong Kong City Hall – Theatre

FULL Technical Information

V. 2020.10.23

Page 1 of 9

Performing Arts Division – Technical Support Unit

Hong Kong City Hall
G/F, City Hall Low Block,
5 Edinburgh Place,
Central, Hong Kong
Phone
852-2921 2840
Fax
852-2877 0353



Hong Kong City Hall Theatre, is designed primarily for stage presentations with or without orchestra and acoustically best suited for the spoken voice, but it is also used frequently for chamber music recitals and cinema shows.

CONTACTS

Karen Law
Senior Manager (CS/CH)
Direct Line
852- 2921 2888

Sophia Chan
Manager (Hiring
Management)
Direct Line
852- 2921 2835
Fax Line
852- 2524 5898
852- 2877 0353

Karen Lau
Resident Technical
Manager(CH)
knylau@lcsd.gov.hk
Direct Line
852- 2921 2802
Fax Line
852- 2537 6307



DIRECTIONS

MTR:
Island Line, Central Station, Exit J
Airport Express or Tung Chung Line, Hong Kong Station, Exit A

Freeway (From W to E):
Connaught Road Central →
Edinburgh place (turn left on
City Hall Wilson Car Park)

Freeway (From E to W):
Connaught Road Central →
Connaught Road Place (turn
right on Jardine House) →
Connaught Road Central →
Edinburgh place (turn left on
City Hall Wilson Car Park)

GENERAL SET-UP

Theatre operates on a 'bare-walls' touring policy. That is, all equipment is normally set-up and struck within the booking period. Hires are reminded to allow sufficient preparation time to hang theatre masking, rig all overhead stage lighting and set up sound system. Check with our Technical Manager for any other equipment and technical enquiry.

LOADING

Rolling gate at stage right:
2.80 x 3.60m (W x H)

Loading dock height: 1.20m
above street level

STAGE ENTRANCE

Backstage entrance

PARKING

Permit required





AUDITORIUM



Max. Total Seating: 463

Orchestra Pit. Formed by removing forestage traps Capacity of 8-15 musicians.

No removal of Seats is needed.

PROSCENIUM

Structural Opening

9.62 x 5.08m (W x H)

STAGE WIDTH

Centreline to stage right

9.50m

Centreline to stage left

12.00m

Down stage

11.00m

Between fly floors

17.00m – 7.50(SR) / 9.50(SL)

STAGE DEPTH

Rear of Proscenium to backwall

9.30m

Rear of Proscenium to forestage edge

3.00m

STAGE HEIGHT

Clear under SR fly floors

5.00m

Clear under SR side Lx ladders

3.10m

Clear under SL fly floors

5.00m

Clear under SL side Lx ladders

3.10m

Clear under grid

12.40m

Maximum counterweight bar flying height

11.00m

Above Auditorium

1.02m

FORESTAGE / ORCHESTRA PIT

ORCHESTRA PIT

Formed by removing forestage traps

Dimensions

9.30 x 2.40 x 1.97m (W x D x H)

Capacity

8 – 15 musicians

Pit setup provision with conductor podium, platform, musician chairs, stools, music stands, and music lights

STAGE FLOOR

Flat black surface hardboard

480kg/m² SWL

TRAP

2 traps: 1 at CS, 1 at apron. Under stage 1.80m

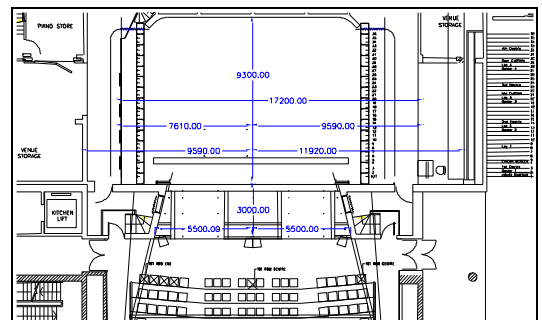
Footlight trough at DS

CYCLORAMA WALL

Cyclorama wall is permanent with curvature at right and left side. It is of white plaster and has a smooth surface.

SIDE STAGE

Very limited area





REAR STAGE

Not available

The fire shutter is treated as a safety curtain by FSD and cannot be obstructed by scenery, equipment or stage wagon in production.

STORAGE SPACE

Scenery dock is at stage right	6.25 x 5.03m (W x H)
Reserved as venue's store (included in Sc. Dock area)	3.25 x 5.03m (W x H)

CROSSOVER

Corridor behind stage

RIGGING

House Curtain (Golden yellow)

Bar 1, operated both fly in and out; draw left and right manually

Cinema screen	8.48 x 3.98m (W x H)
Bar 4 (From screen bottom to stage floor 5.40m)	

Stage Lighting Bar

Capacity	230kg SWL
Length	13.00m
Standard lighting bars	Bar 3, 14, and 23
Cyclorama lights	Bar 32

Rigging System

Single purchase counterweights	36
Counterweight frame located at stage left	
Bar diameter (generally)	60mm (upper bar) 48mm (lower bar)
Bars distance (generally)	0.20m
Capacity	230kg SWL
Length	13.00m
Pinrail	None
Side Bars	None
Point Hoists	None

STAGE EQUIPMENT

Stage Drapery

Black masking	legs	10	flat	3.00 x 5.60m	General rig (W x H)
	borders	5	flat	13.00 x 2.50m	General rig (W x H)
	half tabs	4	fullness	7.00 x 6.00m	Mid Curtain and Rear Curtain
	tabs	2	flat	13.00 x 6.00m	
Projection screen (Front / Back)		1		4.00 x 3.00m	On stand or hang on bar

Acoustic shell

9 pcs.

Orchestra Riser

Wenger Trouper

Aluminum frame platform. Chair rails and guard rails available. No drilling or painting.

2.4 x 1.2m (W x D)	3	203mm(H)
	3	407mm(H)
	3	610mm(H)

Choir Riser (3 or 4 steps)	Wenger Tourmaster	for approx. 75 persons
-----------------------------------	-------------------	------------------------

Orchestra Chair	40
------------------------	----

Music Stand	30
--------------------	----



Conductor's Podium	1	0.96 x 0.82 x 0.15m (W x L x H)
Conductor's Stand	1	
High Stool	5	(Share with Concert Hall)
Ceremony Chair	12	
Podium	1	0.76 x 0.45 x 1.22m (W x D x H)
Table	5	1.22 x 0.76 x 0.74m (W x D x H)
Table Cloth		
Dancing Tile <i>for dance show only</i>	Black for main stage <u>(Please allow time to lay the ties during booking time)</u>	
Stage Carpet <i>for Chinese Opera only</i>	Green	2 4.50 x 5.50m
Instrument	Concert Grand Piano	2 Steinway & Sons (incur extra charge)
	Hapsichord	1 William Dowd (Share with HKCC and incur extra charge)
	Harp	1 Lyon & Healy Harps (Share with Concert Hall and incur extra charge)
	Timpani	1 set of 4 ADAMS PRO GEN 2 (23",26",29",32" Share with Concert Hall and incur extra charge)
	Timpani	1 Premier Percussion (20")
Lift and Ladder Cougar lifts (7.00m Height)	1	<i>operated by competent person & prior approved by venue management only</i>
Counerweights	Available as requested	

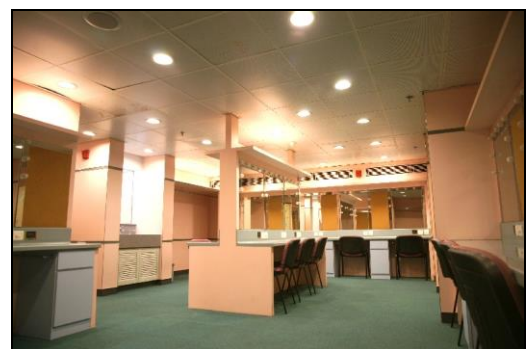
DRESSING ROOM

Stage level **T1:** accommodates 6-8 persons
T2: accommodates 15 persons
T3: accommodates 20-25 persons

All dressing rooms fitted with private toilet and shower

RUNNING WARDROBE

Washing machines, dryers, located at dressing room T1
Irons & boards and steamers can be loaned from Stage Management Department



LIGHTING

Dimmer	ETC Sensor 3 HSR Series dimmer, 178 nos. of 3k, 14 nos. of 5k. Total 192. Located at back stage corridor.
Control Board	ETC Gio, with full backup control facilities, EOS Family OS operating software, located in Lighting Control Room at the back of auditorium right.
Remote Control	ETC – wireless remote control.
Houselight	Dimmer controlled. Controlled independently or via lighting control board.
Circuit	178 x 3kW, 14 x 5kW production lighting circuits, fixed wiring type, all circuits are terminated



to 15A socket outlets to UK standard on the production lighting boxes, distributed at various locations throughout the Stage and lighting bridges.

Additional Power

380 Volt ; 3-phase/4 wire, 63A/phase and 32A/phase , located in US Left side stage wall c/w.
Connection must be conducted by a local registered electrical worker.

Hirer shall supply adequate circuit protective devices for all bring in electrical installation.

13A wall-mounted socket outlets at UK standard are provided on the stage.

Front of House Position

FOH Lighting Bridge, 10.36m throw at 34.61 degree
FOH Lighting Bridge, 8.42m throw at 44.32 degree (Apron)

Profile	750W	ETC	Source 4 (15/30)	16	Top sides of apron
	750W	ETC	Source 4 (25/50)	18	Light Bridge
Fresnel	1kW	Selecon	Rama	12	Bar 3
	1kW	Selecon	Rama	8	Bar 14
	1kW	Selecon	Rama	9	Bar 23
Cyclorama light Ground Row	1.25kW	Selecon	Aurora 10 AUCYC 4L	4	Top (Bar 32)
	625W	Selecon	Aurora GR 4-way Linear	4	Bottom
Follow Spot	1.8kW	Robert Juliat	FLO	2	Auditorium back
Effects Lantern	750W	ETC	Source 4 70 Profile spot	2	Bar 32, Optical effect moving drive
	Effects (Max. 2)		Fire	2	
			Cloud	2	
			Spiral (rain)	2	
			Radial (water)	2	
Smoke generator				As required from pool stock	
Strobe Light				As required from pool stock	
UV light				As required from pool stock	
Colour Scroller		Rainbow	Colour Call	14 (for 1kw Fresnel)	
Others	Side light ladder			8	
	Side light tower			8 (Pre-rigged and share with Concert Hall)	
Tower equipment setup:	5 (top)		As request	220cm*	
	4		750W ETC Source 4 zoom15/30	180cm*	
	3		1kW Selecon Rama Fresnel	135cm*	
	2		1kW Strand Cantata Fresnel	90cm*	
	1 (bottom)		750W ETC Source 4 zoom15/30	45cm*	

* = Height the equipment from the centre of lens to the floor

Supply of above equipment subject to availability on receipt of a lighting plan.

Equipment availability does vary slightly according to equipment conditions and maintenance. Check with Technical Manager for any updates.

Hirer will be provided with basic lighting only, from available hung equipment, if technical preparation time is less than 2 hours in the booking.

All brought-in “Electrical and Stage Lighting Equipment” to be used in LCSD PA venues, shall meet the requirements of “Code of Practice for Electricity (Wiring) Regulations (2009 Edition)”. Please contact



the venue management for any electrical safety concern. Website reference:

http://www.emsd.gov.hk/emsd/eng/welcome/em_safety.shtml

SOUND

Sound System

Main central cluster :	
Clair Brothers kiT12+	2
Clair Brothers kiT-Sub-mini+ Subwoofer	2
Each side of proscenium :	
Clair Brothers kiT12+	2 on each side
Front Fill Speakers :	
Clair Brothers 5CX-P-70	4

Main Control Console

Studer Vista V-32 mixing console	
Mono inputs	28
Stereo inputs	4
Aux outputs	10
Group outputs	10
Matrix outputs	8
Control room at the back of auditorium	

Microphone tie line

At hanging bars	4
Channel Multi-core outlets at stage left	16
Channel Multi-core outlets at stage right	16

Accessory Electronics (Pre-aligned, not loose equipment)

Lexicon PCM96SUR-D reverb/effect processor	2
--	---

Microphone

B&K 4009 A-B stereo recording microphone system	2
Crown PCC 160	3
AKG C414B-ULS	3
Neumann KM 183	2
Neumann KM 184	4
Sennheiser MD 421-II	2
Shure MX412	2
Shure Beta 58	4
Shure SM 57	4
Shure PG 58	2

Wireless Microphone

Sennheiser UHF SKM 5200-II hand-held type	6
Sennheiser UHF SK 5212-II body-pack type	6
Max. 6 units with a minimum booking of 2 sessions (Incur extra charge)	

Stage Monitor

d&b audiotechnik M6	10
Meyer Sound UP-JUNIOR	2
Montarbo M11A	2

CD

Tascam CD-6010 CD player	2
--------------------------	---

CD Recorder

Tascam SS-CDR250N	2
-------------------	---

DVD Recorder

JVC SR-HD2700US (CCTV recording)	1
----------------------------------	---

Multimedia Projector

Panasonic PT-DZ870EK (8500 ANSI Lumens)	1 (incur extra charge)
---	---------------------------

(V12-15, W12-15 & T12-15 at auditorium needs to be blocked for control panels)

Video Monitor	SWIT S-1093F 9" Full HD Broadcast LCD Monitor	6
----------------------	---	---



Additional Facility	Flown Cinema Screen	Bar 4
	The distance between the projection windows and the centre of the screen is 23.3m	
	TOSHIBA DENKO 16mm/35mm film projectors	2
	Christie CP 4230 Digital Cinema Package	1
	Meyer Sound Dolby 7.1 Surround Sound Cinema System	

COMMUNICATION

Stage manager control panel at stage left
Dual channels production communication systems for stage, lighting and sound
Paging and show relay system
Cue light system
Close Circuit TV system
Production desk can be set at the middle of the stall

**Prior to booking date, please confirm with Technical Manager for the availability of the equipment.
All required equipment will be set-up during the booking sessions; please allow adequate time for equipment set-up before performance or rehearsal**



POOLED LIGHTING EQUIPMENT LIST
for Productions with a Lighting Designer

				<u>Theatre</u>	<u>Concert Hall</u>
Profiles	750W	ETC	Source 4 zoom 25/50	12	8
	750W	ETC	Source 4 zoom 15/30	35	30
	1kW	G&E	Par 64 (CP61)	20	12
Fresnels	2kW	Selecon	Arena Theatre F	3	3
	1kW	Strand	Cantata F	10	10
Pebble Convex	1kW	Strand	Cantata PC	10	10
Effects	750W	ETC	70° Profile Spot	2	
Lantern					
Effects (Max. use of 2)			Fire	2	
			Cloud	2	
			Spiral (rain)	2	
			Radial (water)	2	
Music light	25W			35	35
Light stand Floor stand				8	8
				12	12
Light tower			1.90m height	4	4
Gobo holder		Source 4	A size	54	
			B size	24	
Iris		Source 4		28	
Strobe light		MARTIN	Atomic 3000 DMX	2	2
UV Light (Tube)	400W	Wildfire	LT-400F	2	2
Smoke machine		Viper	NT	2	
Portable screen			1.80 x 1.80m		1 (On stand)
			2.40 x 2.40m		1 (On stand)

Equipment on this list allocated on a first come first served basis on presentation of a complete lighting plan.

Pool equipment cannot be reserved for any pending design.

Prior to booking date, please confirm with Technical Manager for the availability of the equipment. All required equipment will be set-up during the booking sessions; please allow adequate time for equipment set-up before performance or rehearsal



POOLED SOUND EQUIPMENT LIST
for Productions with a Sound Designer

Microphone pool	Neumann KMR-82i shotgun	4
	AKG D112	3
	AKG C411	4
	Shure 565SD	2
	Shure Beta 87	2
	Shure SM94	3
	DPA 2011A	8
	DPA 4099	8

Equipment on this list allocated on a **first come first served** basis on presentation of a complete production audio design.

Pool equipment cannot be reserved for any pending design.

Prior to booking date, please confirm with Technical Manager for the availability of the equipment.
All required equipment will be set-up during the booking sessions; please allow adequate time for equipment set-up before performance or rehearsal