



**Performing Arts
Division –
Technical Support
Unit**

**Hong Kong Cultural
Centre**

10 Salisbury Road
Tsim Sha Tsui,
KLN, HK, China
Phone
852-2734 2009
Fax
852-2739 0066

CONTACTS

Evelyn Yip

Senior Manager
(HKCC/Venue)
Direct Line
852- 2734 2821

Katharine Ng

Manager
(HKCC / House
Management)
Direct Line
852- 2734 2804

Wheel Lo

Resident Technical
Manager (HKCC)
rtmhkcc@lcsd.gov.hk
Direct Line
852- 2734 2814
Fax Line
852- 2739 0066

GENERAL SET-UP

Hong Kong Cultural Centre Concert Hall operates on general lighting and masking rig, all the other equipment needs to be set-up and struck within the booking period. Hirers are reminded to allow sufficient preparation time to change our standard lighting and stage rigging. Check with our Technical Manager for any other equipment and technical enquiry.

Hong Kong Cultural Centre – Concert Hall

FULL Technical Information

V. 2025.04.10

Page 1 of 8



The HKCC Concert Hall is a single volume space encompassing a concert platform and with seating surrounding it by 360°.

The Hall is primarily used for Concerts, Recitals, etc., and for other events such as Seminars and Assemblies.

DIRECTIONS

MTR:

Tsuen Wan Line, Tsim Sha Tsui Station, Exit E

West Rail Line, East Tsim Sha Tsui Station, Exit L6

Ferry:

Tsim Sha Tsui Star Ferry

Bus:

Hong Kong Cultural Centre Bus Stop: 1, 1A, 2, 6, 7, 8A, 8P, 9

Tsim Sha Tsui Star Ferry Terminus: 1, 1A, 2, 5, 5A, 5C, 5P, 6, 7, 8, 8A, 8P, 9, 28, 234X, 234P

Nearby Public Car Parks:

Car Parks in Ocean Terminal, Ocean Centre, One Peking, The Sun Arcade and K 11 MUSEA



LOADING

Electrical Lifting Platform for Loading: 1.9 x 3.0 m (W x L)

Shutter Opening:

3.0 x 4.0m (W x H)

STAGE ENTRANCE

Entrance facing Star Building.

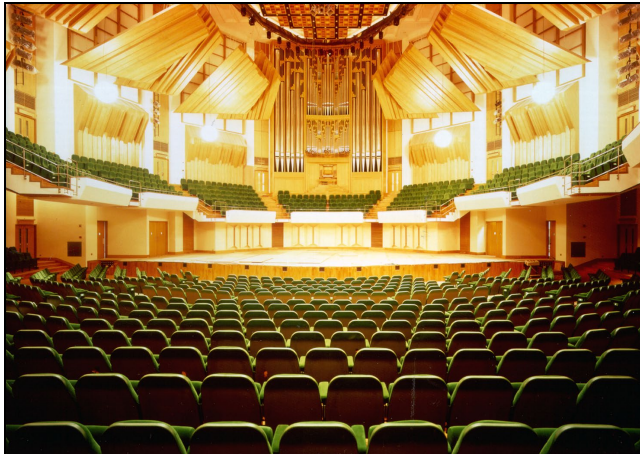
PARKING

Permit required





AUDITORIUM



Max. Total Seating: 1971

Stalls: 1044

Balcony: 913

Box Seat: 14

AUDITORIUM

The HKCC Concert Hall is a single volume space encompassing a concert platform and with seating surrounding it by 360°. The Hall is primarily used for Concerts, Recitals, etc., and for other events such as Seminars and Assemblies. There are a total of 1971 seats, which include 1044 seats in stalls, 913 seats balcony and 14 box seat.

ACOUSTIC

The hall is finished in high quality oak and fitted with adjustable acoustic canopy (7.50-12.00m) and curtains to ensure quality acoustics effect.

STAGE PLATFORM

Maximum Dimension

18.49 x 14.85m (W x D)

Total Useable Area

274.6 m²

Choir stalls on balcony behind with 186 seats in 3 sections, or used as additional audience seating. Balconies overhang platform by approx. 1.00m with + 2.30m clear height below.

STAGE HEIGHT

Above Auditorium

0.95m

STAGE FLOOR

Flat, Danish white oak

450kg/m²

- No nails or screws allowed.

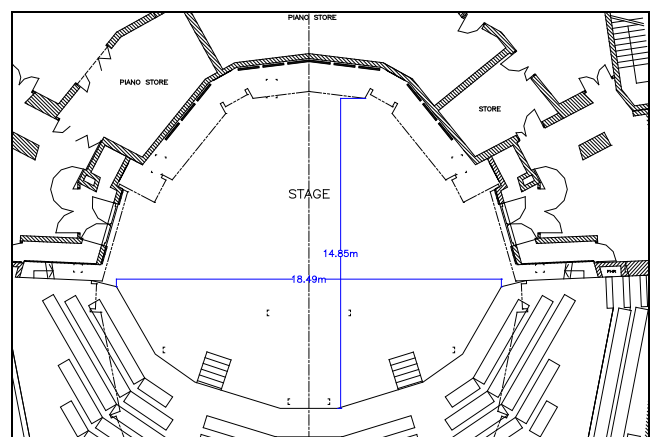
SWL

SIDE STAGE

Limited area

STORAGE AREA:

Limited area



ACCESS

Large double doors on either side of stage 1.78 x 2m (W x H) from orchestra assembly area and loading platform lift 1.90 x 3.00m (W x D).

GOODS LIFT from ground floor to 3/F, 3M/F, 4/F and 5/F.

Door width

2.40m

Door height

2.40m

Door diagonal

3.40m



Lift car width	2.30m
Lift car depth	3.40m
Lift car height	2.40m
Lift car diagonal (width/height)	4.20m
Lift car diagonal (width/height/depth)	4.70m

STAGE EQUIPMENT

Orchestra Riser

Aluminum frame platform with chair rails.

No drilling or painting on the platform.

2.4 x 1.2m (W x L)	203mm(H) x 6
	407mm(H) x 6
	610mm(H) x 12

Choir Riser (4 steps) approx. 120 person

Musician Chair 160

Music Stand 110

Double Bass Stool 10

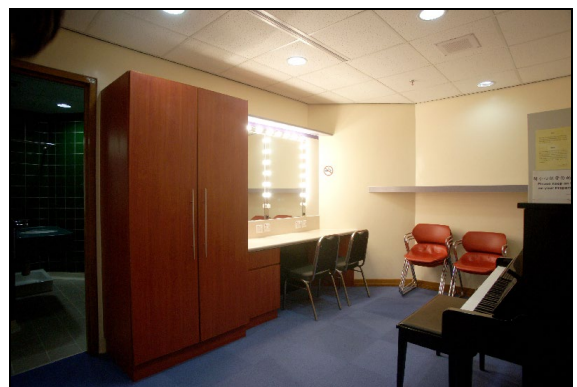
Conductor podium One step (with or without rail)

Instrument	Pipe Organ	1	Rieger (Incur extra charge)
	Celesta	1	Schiedmayer & Sohne
	Harp	1	Salvi Diana (Incur extra charge)
	Harpsichord	1	William Dowd Boston 1966 (Incur extra charge)
	Concert Grand Piano	3	Steinway & Sons (Incur extra charge)
	Upright Piano	1	Yamaha YUS 5 (in dressing room CD 12)
	Timpani	1 set of 4	Yamaha (Incur extra charge)
	Chinese drum	1	

DRESSING ROOM

Level 1 (Stage)	2 for 1 (Conductor's Room, CD 1)
Level 3	Female chorus / orchestra dressing. (CD 2, CD 3*)
Level 3M	Male chorus / orchestra dressing. (CD 4, CD 5*)
Level 4	3 for 1/2 (CD 6, CD 7, CD 8)
Level 5	4 for 1/2 (CD 9, CD 10, CD 11, CD 12 with an upright piano) 1 for 12 (CD 13*)

*Dressing rooms fitted with private toilet and shower
(except those with *)*



LIGHTING

Overhead dedicated orchestral / recital lighting from suspended acoustic canopy, or fixed simple rig to provide some presentation lighting for variety, jazz and popular music events.

No changes to lighting rig except with prior agreement at time of booking, and need to reset the General rig during the booking period.

Dimmer	ETC Digital Dimmer, 10kW	8
	ETC Sensor 3 Digital ThruPower Dimmer 3kW	90
	Dimmer room located next to the control room	
Control Board	ETC Eos Ti-4K with full back up control facilities, controllable of maximum 4,096 outputs/parameters, located in control room above Balcony.	



Houselight Dimmer controlled. Controlled independently or via lighting control board.

Circuit 90 x 3.0kW to twin 15A 3-pin ample s/o,
8 x 10kW to 32A CEE 17 s/o and 15A 3-pin ample s/o,
Socket outlets to UK standard respectively on the production lighting boxes, distributed at various locations throughout the stage and lighting bridges.

Additional Power One set of 200Amp-3 phase, located in US Right rear wall with 200Amp clamping busbar for temporary cable connection. One set of 63Amp-3 phase socket outlet.
Connection must be conducted by a local registered electrical worker.

Hirer shall supply adequate circuit protective devices for all bring in electrical installation.

13A wall-mounted socket outlets at UK standard are provided on the stage.

Lighting Equipment and Position

Bridge 1	2kW	Robert Juliat	10/25	2	specials for conductor and soloists with 11-colour scrollers
	2kW	Robert Juliat	10/25	6	open white general stage wash
Bridge 2	2kW	Robert Juliat	10/25	4	specials for conductor and soloist with 11-colour scrollers
	2kW	Robert Juliat	10/25	4	open white general stage wash
	750W	ETC	Source 4 10°	4	open white general stage wash
Up-stage Canopy	1.2kW	Robert Juliat	LUPIN PC	26	open white general stage wash
	750W	ETC	Source 4 25/50	8	open white general stage wash
	480W	High End	Solaframe 1000	9	For banner, specials or conductor stand
	RGBL 200W	Altman	AIP 200 LED PAR 6.5/50	18	For general colour wash
Down-stage Canopy	1.2kW	Robert Juliat	LUPIN PC	10	open white general stage wash
	750W	ETC	Source 4 25/50	12	open white general stage wash
	480W	High End	Solaframe 1000	5	For banner, specials or conductor stand
Up-stage Boom	750W	ETC	Source 4 15/30	4	organ only
Down-stage Boom	750W	ETC	Source 4 19°	12	3-colour general stage wash on each side
Follow spot	800W	Robert Juliat	Arthur LED Follow Spot	2	Incur extra charge
Music stand light				80	

Supply of above equipment subject to availability on receipt of a lighting plan.

Equipment availability does vary slightly according to equipment conditions and maintenance. Check with Technical Manager for any updates.

Hirer will be provided with basic lighting only, from available hung equipment.

All brought-in “Electrical and Stage Lighting Equipment” to be used in LCSD PA venues, shall meet the requirements of “Code of Practice for Electricity (Wiring) Regulations”. Please contact the venue management for any electrical safety concern. Website reference:

https://www.emsd.gov.hk/en/electricity_safety/index.html



SOUND

Sound System	Central Array Loudspeakers:	
	D&B audiotechnik Vi12	6
	D&B audiotechnik Vi-Sub	2
	Supplementary Loudspeakers:	
	D&B audiotechnik Qi7	side stalls 2
	D&B audiotechnik 27S-Sub	side stalls 2
	D&B audiotechnik 5S	stage front 11
	D&B audiotechnik E8	under balcony 7
	D&B audiotechnik Qi10	rear balcony 1
	D&B audiotechnik Qi7	rear balcony 8
Main Control Console	Solid State Logic (SSL) L350	
	Mono inputs	32
	Stereo inputs	12
	Bus outputs	36
	Matrix outputs	16
Stage Monitoring System	D&B audiotechnik E8	6
	D&B audiotechnik Max12	6
Microphone tie line	Tie line boxes at stage left, stage right, stage front and rear auditorium, each have 16 tie lines. In addition, 1 tie line in each side of the backstage area.	
Microphone	DPA 4006A	2
	DPA BLM 4060	2
	DPA 2011C	6
	DPA 4097 CORE Supercardioid Choir Mic	4
	Neumann KM184	4
	Neumann KM185	6
	Shure Beta 57	6
	Shure Beta 58	3
	Shure SM 57	2
	Shure SM 58	6
	Sennheiser UHF Wireless Mic System (Incur extra charge)	
	Including : Handheld : SKM 6000 with MMD 935 capsule	6
	Bodypack: SK 6212 with MKE 2 mic capsule	6
	(Maximum 6 wireless mic can be used for minimum 2 booking sessions)	
	,	
Accessory Electronic (Pre-aligned, not loose equipment)	TC Electronic Finalizer 96K	1
	Avalon VT-737 sp Preamplifier	2
	Millennia HV-3C Preamplifier	1
	Solid State Logic (SSL) Fusion	1
CD / Solid State Player and Recorder	Tascam SS-CDR250N	4
	Tascam SS-R250N	2
Multimedia Projector & Lens	Panasonic PT-RZ120	1 (Incur extra charge)
	Lens ET-DLE060 – 0.6-0.8:1	1
	Lens ET-DLE170 – 1.7-2.4:1	1
	Lens ET-DLE250 – 2.3-3.6:1	1



Projection Screen	(Front Projection / Rear Projection) 5 x 3.8m (W x H) (for minimum 2 booking sessions)	1
--------------------------	---	---

DVD Recorder	JVC SR-HD2700	3
---------------------	---------------	---

COMMUNICATION

Stage manager control panel at stage right	
Single channel wired intercom beltpack	4 units
Cue light system	4 units
Paging and show relay system	
Close Circuit TV system 22"	2 sets

**Prior to booking date, please confirm with Technical Manager for the availability of the equipment.
All required equipment will be set-up during the booking sessions; please allow adequate time for equipment set-up before performance or rehearsal**

2D and 3D CAD drawings are available upon request, please contact the Technical Manager for the files.



POOLED LIGHTING EQUIPMENT LIST
for Productions with a Lighting Designer

Profile	750W	ETC	Source 4 15/30	12		
	750W	ETC	Source 4 25/50	26		
	750W	ETC	Source 4 10°	12		
Beamlight	500W	Strand	Beamlight 500	4		
	1kW	Strand	Beamlight 1000	4		
UV Light	400W	Wildfire	UV-A : WF-401F	4		
Fog Generator		Martin	JEM ZR44 HI-MASS	6	(with fan)	
Haze Generator			Unique 2.1	6		
Others			Strobe units	4		
Iris & Gobo Holder		<u>Iris</u>	<u>Holder</u>	<u>Holder</u>	<u>Gobo</u>	<u>Image</u>
Spotlight Applicable		<u>Qty.</u>	<u>Qty.</u>	<u>Type</u>	<u>Size</u>	<u>Size</u>
Robert Juliat 2kW		10	42 (GT)	A	100mm	68-75mm
			22 (CH)	A	100mm	68-75mm
Source Four		90	110	A	100mm	68-75mm
			40	B	86 mm	64.5 mm

Equipment on this list allocated on a **first come first served** basis on presentation of a complete lighting plan.

Pool equipment cannot be reserved for any pending design.

Prior to booking date, please confirm with Technical Manager for the availability of the equipment.
All required equipment will be set-up during the booking sessions; please allow adequate time for equipment set-up before performance or rehearsal



POOLED SOUND EQUIPMENT LIST

for Productions with a Sound Designer

Microphone	AKG	C414	6
	Crown	PCC160	10
	DPA	4099	20
	DPA	4006A	2
	DPA	d:facto 4018V	4
	DPA	BLM 4060	2
	Neumann	U87A	2
	Schoeps	MK41g + CMC 5U pre amp.	2
	Sennheiser	MD421-II	6
	Shure	Beta 91	2
	Shure	Beta 87C	2
	Shure	Beta 52A	2
	Sennheiser	E835-S	8
	Austrian	OC818	4
	Audio		
	Rupert Neve	RNDI-S	8
CD player	Denon	DN-C635	4
CD / Solid State player and recorder	Tascam	SS-CDR200C	2
	Tascam	SS-CDR250N	2
Processor	Lexicon	PCM 92 Effect Processor	1
	Yamaha	SPX 2000 Effect Processor	1
Audio Description System	Okayo		30

Equipment on this list allocated on a first come first served basis on presentation of a complete production audio design.

Pool equipment cannot be reserved for any pending design.

Prior to booking date, please confirm with Technical Manager for the availability of the equipment.
All required equipment will be set-up during the booking sessions; please allow adequate time for equipment set-up before performance or rehearsal