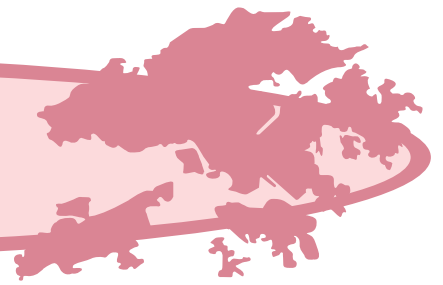




香港故事 Hong Kong Story



1. 你對香港的郊野公園及濕地有多少認識呢？試完成以下的一篇文章。

How much do you know about the country parks and wetlands in Hong Kong? Try to complete the following description.



香港面積約_____平方公里，當中約_____%的土地面積被闢作郊野公園，並受《_____條例》所管理及保護。當中棲息了種類繁多的野生生物，有些動物甚至是香港獨有的，如_____。除了郊野公園，香港還有一些怡人的沼澤、魚塘、紅樹林及泥灘等，這些地方統稱為_____。為保育這遍極具生態價值的濕地，各國政府於1971年共同簽訂一條名為《_____公約》的國際公約，透過國際間的合作及行動保護這些地方。香港的_____及_____已於1995年被劃為_____。

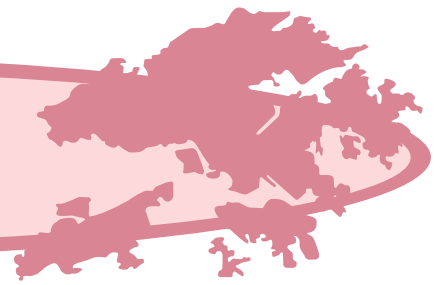
Hong Kong has an approximate area of _____ km². About _____% of the land area designated as country parks is under proper management and protection by the “_____ Ordinance”. Despite its small size, Hong Kong is rich in wildlife species. Some kinds of animals are endemic to our territory such as _____.

Apart from country parks, Hong Kong has many lovely marshes, fishponds, mangroves and mudflats generally called _____.

To provide a framework for international efforts and cooperation for wetland conservation, an international convention known as “_____” was signed by many countries in 1971. In 1995, _____ and _____ in Hong Kong were listed as _____ in China.



香港故事 Hong Kong Story



2. 試把有關濕地的正確描述圈起來。

Circle the correct descriptions about wetland.

i. 香港的濕地主要位於 a. 西北面 b. 西南面 c. 本港各處。

Wetlands in Hong Kong are mainly located in

a. the northwest of b. the southwest of c. throughout the territory .

ii. 濕地佔地球表面土地約 a. 6 % b. 16 %。

Wetlands account for roughly a. 6 % b. 16 % of the Earth's land surface .

iii. 在濕地內 a. 能 b. 不能 孕育生命。

Wetlands a. can b. cannot support propagation of life forms .

iv. 濕地是 a. 人工建成 b. 天然造成 c. 兩者皆可。

Wetlands are a. constructed artificially b. formed naturally c. formed by both ways .

v. 濕地內的水體是 a. 流動 b. 靜止 c. 兩者皆可。

Water in wetland is a. moving b. stationary c. can be in both ways .

vi. 濕地內的水體是 a. 鹹 b. 淡 c. 兩者皆可。

Wetlands are of a. salty water b. freshwater c. can be in both ways .

vii. 濕地退潮時水深 a. 不超過6米 b. 超過6米 c. 不受限制。

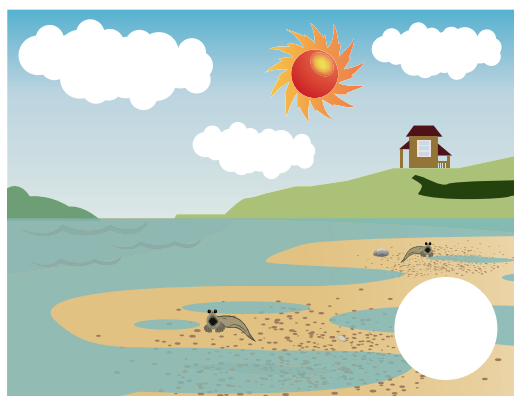
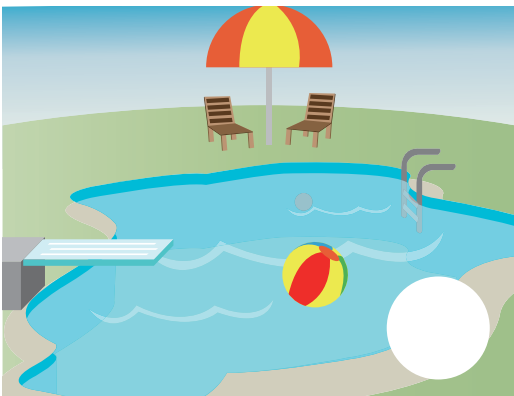
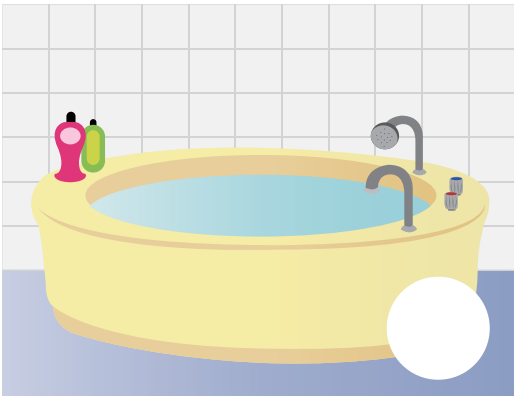
During low tide, the water depth in wetland is

a. less than 6 m b. more than 6 m c. without restriction .



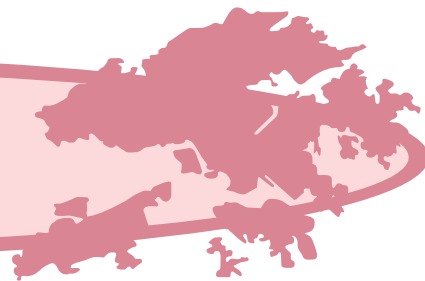
香港故事 Hong Kong Story

3. 承上題，你認為以下哪些是濕地呢？試在濕地旁邊加上（✓）
According to the information provided in Question 2, which of the following do you think is a wetland?
Put a “✓” beside them.





香港故事 Hong Kong Story



4. 以下是一些可在香港濕地中找到的動植物影子，試用香港通俗遊戲「畫鬼腳」的方式找出這些動植物的真正身份吧！

Here are some shadows of plants and animals that can be found in the wetlands of Hong Kong. Find out their real identities by using a Chinese game called "Ghost's foot drawing".

例子 Example

彈塗魚
Mudskipper

秋茄（俗稱水筆仔）
Kandelia candel

海漆
Excoecaria agallocha

招潮蟹
Fiddler crab

黑臉琵鷺
Black-faced Spoonbill