

朱
墨
留
香

香
港
書
法
篆
刻
藝
術

FRAGRANCE of INK

and VERMILLION

*Calligraphy and Seal Carving
by Hong Kong Artists*

Jointly presented by the Provisional Urban Council
and the University of Hong Kong

臨時市政局及香港大學聯合主辦

2.9.1999 - 3.10.1999

香港大學美術博物館

University Museum and Art Gallery

The University of Hong Kong



夷性相蕪合酉日樂如新書

四弟永正

△三朝又令西河乙以鸞忍

三見大人

集屈翁山詩三

凰惜雨許興一
荆此露高何徑
公根終十長森
詩株隨在老人然
在松更憐四
亡柏劉直坐
與到曾節涼
伶冰與生殘
倫霜蒼來陰
學煩慕瘦餘
鳳君同自韻

黃維瑁



鄧爾疋 (1884-1954)

篆書十言聯

DENG Erya (1884-1954)

Couplet in Seal Script

黃維瑁 (1902-1993)

隸書王荊公詩

HUANG Weichang (1902-1993)

Poem in Clerical Script

秀嶽仁兄雅屬

一路沿溪花覆水

幾家深樹碧巖樓

溇園朱汝珍



得歲月延歲月得歡悅且歡悅萬事乘除總在天何必愁腸千
万結放心寬莫膽怯古今興亡如指列金谷繁華眼底塵維陰事
業鋒頭血陶潛籬畔鞠花黃苑蠶湖邊蓋絮白臨潼會上膽氣雄
丹陽縣裏蕭聲絕時未須鐵有光輝運退良金無豔色道運且學照賢心別以方知滋味別起亦淡飲
足家常春淨淨生一世拙 養心歌

少旅先生大正

乙未年春

區襄甫



區襄甫 (1901-1984)
楷書養心歌 1955
OU Xiangfu (1901-1984)
Verse in Regular Script 1955

朱汝珍 (1865-1943)
楷書對聯
ZHU Ruzhen (1865-1943)
Couplet in Regular Script

展品目錄 List of exhibits

- 13
簡琴齋 (1888-1950)
章草詩
JIAN Qinzhai (1888-1950)
Poem in *Zhangcao* Cursive Script
- 14
趙鶴琴 (1894-1971)
金文臨魏季子盤銘 1956
ZHAO Heqin (1894-1971)
Calligraphy in Bronze Script 1956
- 15
謝熙 (1896-1983)
隸書臨張遷碑冊頁 1956
XIE Xi (1896-1983)
Calligraphy in Clerical Script 1956
- 16
羅叔重 (1898-1969)
黑老虎體隸書五言聯
LUO Shuzhong (1898-1969)
Couplet in Black-Tiger Clerical Script
- 17
曾克崙 (1900-1975)
瘦金體楷書詩 1951
ZENG Keduan (1900-1975)
Poem in Slender-Gold Regular Script 1951
- 18
馮襄侯 (1901-1983)
各體書法四屏
FENG Kanghou (1901-1983)
Four Scrolls of Calligraphy in Ancient Scripts
- 19
區襄甫 (1901-1984)
楷書養心歌 1955
OU Xiangfu (1901-1984)
Verse in Regular Script 1955
- 20
黃維琚 (1902-1993)
隸書王荊公詩
HUANG Weichang (1902-1993)
Poem in Clerical Script
- 21
丁衍庸 (1902-1978)
行草書七言詩
DING Yanyong (1902-1978)
Poem in Running-cursive Script
- 22
陳荊鴻 (1903-1992)
行草書荊鴻詩卷 1964
CHEN Jinghong (1903-1992)
Poem in Running-cursive Script 1964
- 23
盧鼎公 (1903-1979)
行書詞
LU Dinggong (1903-1979)
Verse in Running Script
- 24
趙少昂 (1905-1998)
草書詩 1985
ZHAO Shao'ang (1905-1998)
Poem in Cursive Script 1985

- 1
陳伯陶 (1855-1930)
行書七言聯
CHEN Botao (1855-1930)
Couplet in Running Script
- 2
賴際熙 (1865-1937)
行書詩
LAI Jixi (1865-1937)
Poem in Running Script
- 3
朱汝珍 (1865-1943)
楷書對聯
ZHU Ruzhen (1865-1943)
Couplet in Regular Script
- 4
桂玷 (1865-1958)
行書 1946
GUI Dian (1865-1958)
Calligraphy in Running Script 1946
- 5
盧湘父 (1868-1970)
行書康有為詩 1925
LU Xiangfu (1868-1970)
Poem in Running Script 1925
- 6
馮師韓 (1875-1950)
隸書詞
FENG Shihan (1875-1950)
Verse in Clerical Script
- 7
岑光燾 (1876-1959)
行書七言詩
GEN Guangyue (1876-1959)
Poem in Running Script
- 8
溫肅 (1878-1939)
行書 1931
WEN Su (1878-1939)
Calligraphy in Running Script 1931
- 9
區大原 (二十世紀初期)
行書七言詩
OU Dayuan (Early 20th century)
Poem in Running Script
- 10
蘇世傑 (1883-1976)
北碑節錄劉穆之傳 1948
SU Shijie (1883-1976)
Calligraphy in Regular Script 1948
- 11
鄧爾疋 (1884-1954)
篆書十言聯
DENG Erya (1884-1954)
Couplet in Seal Script
- 12
區建公 (1886-1972)
楷書詩
OU Jiangong (1886-1972)
Poem in Regular Script

十外萬里流岷嶓
 上六石真龍
 孤窮羣峭
 豈通脈波平
 早雲滄海
 向港軍
 霹靂
 恍惚
 根危
 世末
 竟
 江
 海
 樓
 鏡
 如
 心
 策
 特
 拔
 世
 詠
 書
 贊
 指
 崇
 孤
 林
 磴
 榭
 魚
 讓
 垂
 不
 景
 烏
 喧
 池
 雲
 際
 伊
 來
 採
 心
 筆
 厚
 蒼
 入
 纒
 碧
 花
 鏡
 琅
 玕
 杪
 兩
 日
 照
 圖
 畫
 迹
 迥
 攬
 三
 香
 峽
 崑
 崙
 迹
 焉
 得
 嶺
 崎
 人
 挽
 鏡
 素
 絕
 壁
 少
 旅
 先
 存
 書
 真
 高

簡琴齋 (1888-1950)
章草詩
JIAN Qinzhai (1888-1950)
Poem in *Zhangcao* Cursive Script

- 25
吳練青 (1906-1988)
草書
WU Lianqing (1906-1988)
Verse in Cursive Script
- 26
黃思潛 (1907-1985)
隸書五言聯 1950
HUANG Siqian (1907-1985)
Couplet in Clerical Script 1950
- 27
袁鴻樞 (1910 生)
隸書七言聯
YUAN Hongshu (born 1910)
Couplet in Clerical Script
- 28
余雪曼 (1912-1993)
瘦金書詩
SHE Xueman (1912-1993)
Poems in Slender-Gold Regular Script
- 29
易越石 (1912 生)
石鼓文
YI Yueshi (born 1912)
Calligraphy in Stone Drum Script
- 30
楊善深 (1913 生)
行書五言聯 1981
YANG Shanshen (born 1913)
Couplet in Running Script 1981
- 31
王漢翹 (1914 生)
草書詩
WANG Hanqiao (born 1914)
Poem in Cursive Script
- 32
方召響 (1914 生)
楷書七言聯 1993
FANG Zhaolin (born 1914)
Couplet in Regular Script 1993
- 33
饒宗頤 (1917 生)
金文
RAO Zongyi (born 1917)
Calligraphy in Bronze Script
- 34
鄭家鎮 (1918 生)
古書體黃山黑虎松詩 1986
ZHENG Jiazhen (born 1918)
Poem in Ancient Script 1986
- 35
梁子江 (1918 生)
行書“論畫詩” 1999
LIANG Zijiang (born 1918)
Calligraphy in Running Script 1999
- 36
何叔惠 (1919 生)
小楷《桃花源記》 1988
HE Shuhui (born 1919)
Verse in Small Regular Script 1988
- 37
蘇文擢 (1921 生)
行書李鹹流《惜春詞》 1992
SU Wenzhuo (born 1921)
Verse in Running Script 1992
- 38
余寄撫 (1921 生)
篆書四言聯
YU Jifu (born 1921)
Couplet in Seal Script
- 39
賴恬昌 (1921 生)
行書李太白酬張司馬贈墨
LAI Tianchang (born 1921)
Poem in Running Script
- 40
黃錦璋 (1922 生)
行書 1985
HUANG Jinzhang (born 1922)
Calligraphy in Running Script 1985
- 41
韓雲山 (1923 生)
隸書漢簡 1987
HAN Yunshan (born 1923)
Calligraphy in Bamboo Slip Clerical Script 1987
- 42
陳文傑 (1925 生)
隸書陶淵明《歸去來辭》 1975
CHEN Wenjie (born 1925)
Verse in Clerical Script 1975
- 43
曾榮光 (1926 生)
行書張孝祥《江西月》 1994
ZENG Rongguang (born 1926)
Verse in Running Script 1994
- 44
陳若海 (1929 生)
草書黃山谷詞
CHEN Ruohai (born 1929)
Verse in Cursive Script
- 45
何幼惠 (1931 生)
小楷《離騷》 1988
HE Youhui (born 1931)
Classic in Small Regular Script 1988
- 46
葉愷 (1932 生)
草書陸游《聞雁詩》
YE Kai (born 1932)
Poem in Cursive Script
- 47
馬國權 (1931 生)
篆書聯 1998
MA Guoquan (born 1931)
Couplet in Seal Script 1998
- 48
黃君實 (1934 生)
行書《海鷗賦》 1990
HUANG Junshi (born 1934)
Verse in Running Script 1990
- 49
翟仕堯 (1935 生)
楷書四言聯 1997
ZHAI Shiyao (born 1935)
Couplet in Regular Script 1997
- 50
徐子雄 (1936 生)
點與線的動態 1995
XU Zixiong (born 1936)
Lines in Motion 1995
- 51
常宗豪 (1937 生)
行書五言聯
CHANG Zonghao (born 1937)
Couplet in Running Script
- 52
黃兆顯 (1941 生)
草書《楊柳歌》 五屏
HUANG Zhaoxian (born 1941)
Verse in Cursive Script
- 53
李潤桓 (1941 生)
行書 1981
LI Runhuan (born 1941)
Calligraphy in Running Script 1981
- 54
吳任 (1942 生)
甲骨文、草書及篆刻 1996
WU Ren (born 1942)
Calligraphy in Oracle Bone and Running Scripts with Seal Marks 1996
- 55
戚谷華 (1942 生)
行書
QI Guhua (born 1942)
Calligraphy in Running Script
- 56
萬青力 (1945 生)
楷書十言對聯
WAN Qingli (born 1945)
Couplet in Regular Script
- 57
區大為 (1947 生)
篆書十言聯 1995
OU Dawei (born 1947)
Couplet in Seal Script 1995
- 58
王子天 (1947 生)
行書“無極” 1999
WANG Zitian (born 1947)
Calligraphy in Running Script 1999
- 59
鄭明 (1949 生)
行書詩 1978
ZHENG Ming (born 1949)
Poem in Running Script 1978
- 60
錢開文 (1949 生)
草書曹孟德詩句 1985
QIAN Kaiwen (born 1949)
Poem in Cursive Script 1985
- 61
葉民任 (1949 生)
行書四言聯 1995
YE Minren (born 1949)
Couplet in Running Script 1995
- 62
陳用 (1950 生)
四體宋詩 1999
CHEN Yong (born 1950)
Poems in Four Scripts 1999
- 63
蘇樹輝 (1951 生)
行書聯語 1998
SU Shuhui (born 1951)
Verse in Running Script 1998
- 64
容浩然 (1954 生)
小楷《增廣賢文》 1996
RONG Haoran (born 1954)
Calligraphy in Small Regular Script 1996
- 65
黃靈雨 (1957 生)
草書《石濤畫譜·脫俗章》 1998
HUANG Lingyu (born 1957)
Calligraphy in Cursive Script 1998
- 66
任貫中 (1960 生)
行草書姜白石詞 1992
REN Guanzhong (born 1960)
Verse in Running-cursive Script 1992
- 67
吳肇忠 (1961 生)
行書劉禹錫詩 1989
WU Zhaozhong (born 1961)
Poem in Running Script 1989
- 68
易孺 (1872-1941)
白文方印“證常齋” 1935
鈐印紙本
Yi Ru (1872-1941)
Seal mark with three incised characters
'Zheng Chang An' 1935
- 69
易孺 (1872-1941)
白文方印“苦禪” 1928
鈐印紙本
Yi Ru (1872-1941)
Seal mark with two incised characters
'Ku Zen' 1928
- 70
馮師韓 (1875-1950)
朱文青田石長方印章“生平不作妄語”
FENG Shihan (1875-1950)
Rectangular seal with six carved characters 'Sheng Ping Bu Zuo Wang Yu'
Qingtian stone
- 71
鄧爾疋 (1884-1954)
白、朱文青田石對章“繪”“藝益” 1929
DENG Erya (1884-1954)
Pair of seals:
a: one incised character 'Zeng'
b: two carved characters 'Yi Yi' 1929
Qingtian stone
- 72
鄧爾疋 (1884-1954)
白、朱文印“碧霞仙館珍藏”“碧霞仙館藏書”
DENG Erya (1884-1954)
Pair of seal marks:
a: six incised characters 'Bi Xia Xian Guan Zhen Cang'
b: six carved characters 'Bi Xia Xian Guan Cang Shu'
- 73
簡琴齋 (1888-1950)
白文福州石方印章“思言敬事”
JIAN Qinzhai (1888-1950)
Square seal with four incised characters 'Si Yan Jing Shi'
Fuzhou stone

- 74
簡琴齋 (1888-1950)
白文青田石方印章 “以意為之”
JIAN Qinzhai (1888-1950)
Square seal with four incised characters ‘Yi Yi Wei Zhi’
Qingtian stone
- 75
趙鶴琴 (1894-1971)
朱文象牙長方印 “崇基學院圖書館藏” 1963
ZHAO Heqian (1894-1971)
Rectangular seal with eight carved characters ‘Chong Ji Xue Yuan Tu Shu Guan Cang’ 1963
Ivory
- 76
趙鶴琴 (1894-1971)
朱文象牙長方印 “香港中文大學圖書館藏” 1964
ZHAO Heqian (1894-1971)
Rectangular seal with eleven carved characters ‘Xiang Gang Zhong Wen Da Xue Tu Shu Guan Shou Cang’ 1964
Ivory
- 77
羅叔重 (1898-1969)
白文壽山石方印章 “曙光在前” 1949
LUO Shuchong (1898-1969)
Square seal with four incised characters ‘Shu Guang Zai Qian’ 1949
Shoushan stone
- 78
羅叔重 (1898-1969)
朱文壽山石方印章 “雄齋鑿藏”
LUO Shunchong (1898-1969)
Square seal with four carved characters ‘Xiong Zhai Jian Cang’
Shoushan stone
- 79
馮康侯 (1901-1983)
白、朱文壽山對章 “宗麟印信” “古岡曾氏” 1942
FENG Kanghou (1901-1983)
Pair of seals:
a: four incised characters ‘Zong Lin Yin Shen’
b: four carved characters ‘Gu Gang Zeng Shi’ 1942
Shoushan stone
- 80
丁衍庸 (1902-1978)
白文壽山石方印 “也無風雨也無晴”
DING Danyong (1902-1978)
Square seal with seven incised characters ‘Ye Wu Feng Yu Ye Wu Qing’
Shoushan stone
- 81
丁衍庸 (1902-1978)
白文壽山石方印章 “波瀾壯闊”
DING Danyong (1902-1978)
Square seal with four incised characters ‘Bo Lan Zhuang Kuo’
Shoushan stone
- 82
陳語山 (1904-1987)
白文青田石方印章 “也曾馳騁中原”
CHEN Yushan (1904-1987)
Square seal with six incised characters ‘Ye Ceng Chi Cheng Zhong Yuan’
Qingtian stone
- 83
陳語山 (1904-1987)
白文青田石方印章 “語山日課” 1972
CHEN Yushan (1904-1987)
Square seal with four incised characters ‘Yu Shan Ri Ke’ 1972
Qingtian stone
- 84
易越石 (1912 生)
白文方印 “李祖佑印” 1958
鈐印紙本
YI Yueshi (born 1912)
Seal mark with four incised characters ‘Li Zu You Yin’ 1958
- 85
陳風子 (1912 生)
白文青田石、蒙古石對章 “碧蹄曾踏春風” “留住此刻光陰” 1994, 1996
CHEN Fengzi (born 1912)
Pair of square seals each with six incised characters, ‘Bi Ti Ceng Ta Chun Feng’ ‘Liu Zhu Ci Ke Guang Yin’ 1994, 1996
Qingtian stone, Mongolia stone
- 86
陳風子 (1912 生)
白文壽山石方印章 “迎風草堂” 1972
CHEN Fengzi (born 1912)
Square seal with four incised characters ‘Ying Feng Cao Tang’ 1972
Shoushan stone
- 87
范甲 (1920 生)
朱、白文青田石方印章 “荷齋” “萬甲之鉢” 1941
FAN Jia (born 1920)
Square seal with two carved characters ‘He Zhai’ and four incised characters ‘Wan Jia Zhi Xi’ 1941
Qingtian stone
- 88
范甲 (1920 生)
朱文青田石方印章 “萬梅堂” 1994
FAN Jia (born 1920)
Square seal with three carved characters ‘Wan Mei Tang’ 1994
Qingtian stone
- 89
姜丕中 (1920 生)
朱文青田石方印章 “白雲深處” 1987
JIANG Pizhong (born 1920)
Square seal with four carved characters ‘Bai Yun Shen Chu’ 1987
Qingtian stone
- 90
姜丕中 (1920 生)
白文青田石方印章 “綠林好漢” 1984 - 1986
JIANG Pizhong (born 1920)
Square seal with four incised characters ‘Lu Lin Hao Han’ 1984-1986
Qingtian stone
- 91
陳秉昌 (1921 生)
白文陶製方印章 “陳秉昌印” 1986
CHEN Bingchang (born 1921)
Square seal with four incised characters ‘Chen Bing Chang Yin’ 1986
Ceramic
- 92
陳秉昌 (1921 生)
朱文壽山石方印章 “與木石居” 1977
CHEN Bingchang (born 1921)
Square seal with four carved characters ‘Yu Mu Shi Ju’ 1977
Shoushan stone
- 93
唐積聖 (1923 生)
朱文玉方印章 “學然後知不足” 1998
TANG Jisheng (born 1923)
Square seal with six carved characters ‘Xue Ran Hou Zhi Bu Zu’ 1998
Jade
- 94
唐積聖 (1923 生)
朱、白文翡翠長方印章 “伍達闊”
TANG Jisheng (born 1923)
Rectangular seal with one carved character ‘Wu’ and two incised characters ‘Da Xian’
Jade
- 95
唐積聖 (1923 生)
趙少昂書竹臂擺 1987
TANG Jisheng (born 1923)
Wrist rest with calligraphy by ZHAO Shao'ang 1987
Bamboo
- 96
唐積聖 (1923 生)
馮康侯書法木硯盒
TANG Jisheng (born 1923)
Inkstone Case with calligraphy by FENG Kanghou
Wood
- 97
孔平孫 (1924 生)
朱文廣東綠石方印章 “謙受益” 1989
KONG Pingsun (born 1924)
Square seal with three carved characters ‘Qian Shou Yi’ 1989
Guangdonglu stone
- 98
孔平孫 (1924 生)
白文壽山石方印章 “以介眉壽” 1998
KONG Pingsun (born 1924)
Square seal with four incised characters ‘Yi Jie Mei Shou’ 1998
Shoushan stone
- 99
馬國權 (1931 生)
朱文蒙古石方印章 “薄解草書” 1993
MA Guoquan (born 1931)
Square seal with four carved characters ‘Bao Jie Cao Shu’ 1993
Mongolia stone
- 100
馬國權 (1931 生)
朱文青田石方印章 “心系鄉國” 1995
MA Guoquan (born 1931)
Square seal with four carved characters ‘Xin Xi Xiang Guo’ 1995
Qingtian stone
- 101
馬國權 (1931 生)
篆刻軸 1995
鈐印紙本
MA Guoquan (born 1931)
Seal marks on paper 1995
- 102
駱曉山 (1934 生)
朱文壽山石隨形印章 “風月夜歸人” 1999
LUO Xiaoshan (born 1934)
Irregular seal with five carved characters ‘Feng Yue Ye Gui Ren’ 1999
Shoushan stone
- 103
駱曉山 (1934 生)
白文壽山石橢圓印章 “性耽金石可延年” 1999
LUO Xiaoshan (born 1934)
Oval seal with seven incised characters ‘Xing Dan Jin Shi Ke Yan Nian’ 1999
Shoushan stone
- 104
茅大容 (1946 生)
白文蒙古石方印章 “是非經過不知難” 1998
MAO Darong (born 1946)
Square seal with seven incised characters ‘Shi Fei Jing Guo Bu Zhi Nan’ 1998
Mongolia stone
- 105
茅大容 (1946 生)
朱文蒙古石方印章刻陶淵明詩句 1999
MAO Darong (born 1946)
Square seal with carved poem by Tao Yuan Ming 1999
Mongolia stone

星期一至六 上午九時三十分至下午六時
星期日 下午一時三十分至五時三十分
公眾假期休息

Monday to Saturday 9:30 a.m. to 6:00 p.m.
Sundays 1:30 p.m. to 5:30 p.m.
Closed on public holidays



香港大學美術博物館
University Museum and Art Gallery
The University of Hong Kong

School of
Professional
And
Continuing
Education
香港大學專業進修學院

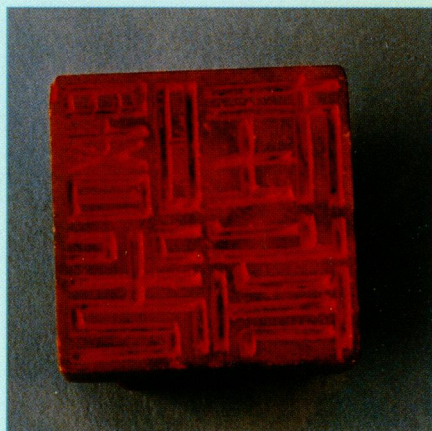
106
 區大為 (1947 生)
 大為治石 1997
 鈐印紙本
 OU Dawei (born 1947)
 Seal marks on paper
 1997



羅叔重 (1898-1969)
 白文壽山石方印章“曙光在前” 1949
 LUO Shuchong (1898-1969)
 Square seal with four incised characters
 'Shu Guang Zai Qian' 1949
 Shoushan stone

107
 禰紹燦 (1948 生)
 朱文蒙古石長方印章“以拳得書”
 1999
 XUAN Shaocan (born 1948)
 Square seal with four carved characters
 'Yi Quan De Shu' 1999
 Mongolia stone

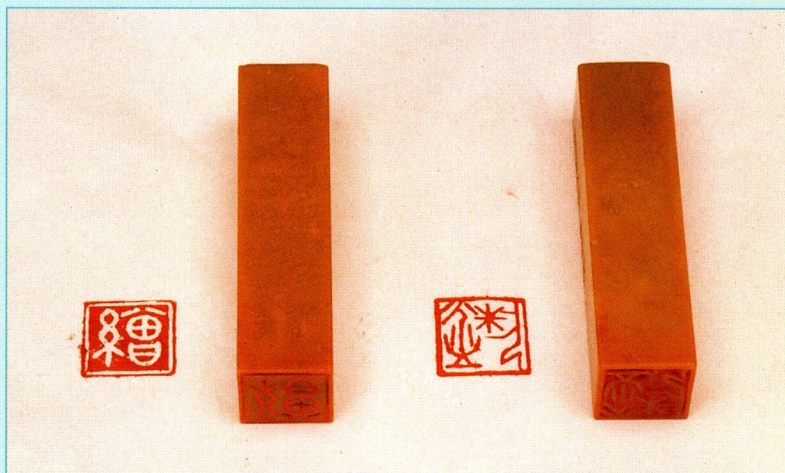
108
 葉民任 (1949 生)
 先秦七子語彙 1997
 鈐印紙本
 YE Minren (born 1949)
 Sayings by Seven Masters of the Pre-
 Qin Period 1997
 Seals marks on paper



109
 傅世亨 (1949 生)
 白文壽山石方印章“乘長風破
 萬里浪” 1997
 FU Shiheng (born 1949)
 Square seal with seven incised
 characters 'Cheng Chang Feng Po Wan
 Li Lang' 1997
 Shoushan stone

110
 傅世亨 (1949 生)
 白文丹東綠石長方印章“心似白雲
 意如流水” 1999
 FU Shiheng (born 1949)
 Rectangular seal with eight incised
 characters 'Xin Si Bai Yun Yi Ru Liu
 Shui' 1999
 Dandonglu stone

111
 鄧昌成 (1949 生)
 朱文昌化石方印章“老繼” 1992
 DENG Changcheng (born 1949)
 Square seal with two carved characters
 'Lao Ji' 1992
 Changhua stone



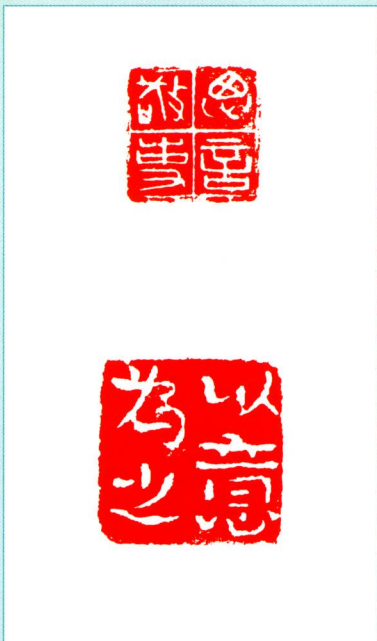
112
 鄧昌成 (1949 生)
 朱文青田石方印章“自強不息” 1991
 DENG Changcheng (born 1949)
 Square seal with four carved characters
 'Zi Qiang Bu Xi' 1991
 Qingtian stone

113
 唐錦騰 (1960 生)
 朱文壽山石長方印章“乘興為之”
 TANG Jinteng (born 1960)
 Rectangular seal with four carved
 characters 'Cheng Xing Wei Zhi'
 Shoushan stone

114
 唐錦騰 (1960 生)
 朱文巴林石方印章“映日荷花
 別樣紅”
 TANG Jinteng (born 1960)
 Square seal with six carved characters
 'Ying Ri He Hua Bie Yang Hong'
 Balin stone



鄧爾疋 (1884-1954)
 白、朱文青田石對章“繼”“藝益” 1929
 DENG Erya (1884-1954)
 Pair of seals:
 a: one incised character 'Zeng'
 b: two carved characters 'Yi Yi' 1929
 Qingtian stone



簡琴齋 (1888-1950)
白文福州石方印章“思言敬事”
JIAN Qinzhai (1888-1950)
Square seal with four incised characters
'Si Yan Jing Shi'
Fuzhou stone

簡琴齋 (1888-1950)
白文青田石方印章“以意為之”
JIAN Qinzhai (1888-1950)
Square seal with four incised characters
'Yi Yi Wei Zhi'
Qingtian stone



馮康侯 (1901-1983)
白、朱文壽山對章“宗麟印信”“古岡曾氏” 1942
FENG Kanghou (1901-1983)
Pair of seals:
a: four incised characters 'Zong Lin Yin Shen'
b: four carved characters 'Gu Gang Zeng Shi' 1942
Shoushan stone

