

香港藝術家系列

HONG KONG ARTISTS SERIES

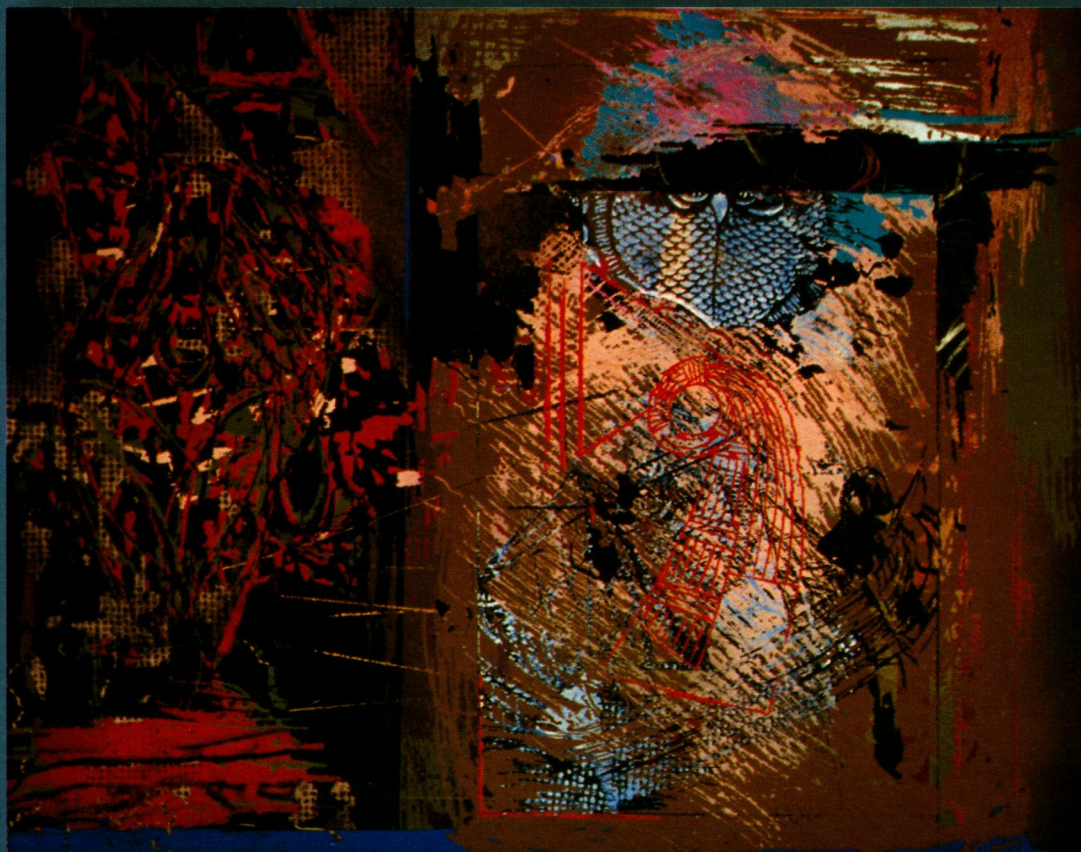
上環文娛中心展覽廳

Exhibition Hall, Sheung Wan Civic Centre

12.7.96 - 30.7.96

# 文志華

## MAN Chi-wah



ENRICHING CITY LIFE  
理想都市携手创

香港市政局主辦  
香港藝術館籌劃

Presented by the Urban Council, Hong Kong  
Organized by the Hong Kong Museum of Art

# 序 言

市政局一向關注香港藝術的發展，並冀藉著舉辦各類型展覽、比賽、教育推廣活動及出版計劃來推動香港藝術發展及鼓勵本地藝術家從事創作。「香港藝術家系列」展覽即為其中一項主要活動。

市政局香港藝術館於一九九二年至九三年間，曾舉辦第一屆「香港藝術家系列」個展，展出翟仕堯、鄭維國、梁巨廷和夏碧泉的代表作品，藉以推介他們在藝術上所作出的貢獻及其成就和風格。為令更多本地藝術家參與其事及更廣泛地鼓勵藝術家從事創作，本館於一九九四年將此項活動改為公開接受申請形式，讓本地藝術家自由參加，結果反應熱烈。本館名譽顧問團費了不少時間心力，從參加的二百五十多位藝術工作者的資料中，選出二十六位具有創意、個人藝術風格及發展潛質的藝術家，陸續

於兩年內在香港藝術館及市政局轄下之文娛中心舉辦小型個展，令市民有機會瞭解他們的藝術風格和對香港藝術有更廣泛認識。



32

這次展出的藝術家是文志華先生。文志華生於香港，一九八三年畢業於香港中文大學藝術系，畢業後一直任職中學教師，九一年獲香港中文大學教育學院教育文憑。文志華擅長油畫創作，其作品多次入選「當代香港藝術雙年展」。他早期的畫作，帶有幾何抽象的風格，結構嚴謹，色調沉著。這種理性的畫面構成，在其後的發展過程中，漸漸解放，演變出一種充滿動感的抽象表現新作風。在其油畫近作之中，鮮明和對比的色彩明顯地佔據了畫面，自由奔放的筆觸亦愈見重要。而他的創作力量，在一系列獨印作品中更形突出。顏料的流動性極富東方水墨的精神，色彩的交疊和穿插令人目眩；浮游於色層之間的壓印形象，令畫中的視覺元素更為豐富；揮灑的潑彩和滴彩，將作品推向淋漓盡致的境界。這次展出的作品，包括了他的油畫和獨印近作，充份反映文志華先生在西畫媒介創作上的鮮明個

性和實驗精神。本人謹此向他致賀，並祈望他在藝術上百尺竿頭，更進一步。

本人特別多謝香港藝術館名譽顧問團，他們對舉辦第二屆「香港藝術家系列」展覽及挑選藝術家方面，提出寶貴意見，貢獻良多。本人亦對各位藝術工作者致以衷心謝意，他們的熱誠參與和衷心支持，令此次活動得以順利舉行。最後，本人謹希望各位藝術家繼續積極從事創作，共同推廣香港藝術。

香港藝術館總館長  
曾柱昭

# INTRODUCTION

It is a major aim of the Urban Council to foster the development of Hong Kong art and to encourage local artists in artistic creation by presenting art exhibitions, competitions, education and extension activities and producing publications. The presentation of exhibitions of the Hong Kong Artists Series is one of these promotional measures.

The Hong Kong Museum of Art, Urban Council organized the first Hong Kong Artists Series exhibitions from 1992 to 1993 to feature the representative works of JAT See-yeu, CHENG Wei-kwok, LEUNG Kui-ting and HA Bik-chuen to show their artistic styles, accomplishments and contributions in art. In order to enable more artists to participate in this event, the Museum broadened the scope of the exhibition series by changing it to an open application basis in 1994, in which artists could submit their portfolios and works for selection. Artists responded enthusiastically and the Museum's Honorary Advisers carefully selected 26 budding artists who demonstrated creativity, distinctive personal styles and potential for further development from a total of over 250 submitted entries. Solo exhibitions of these 26 artists will be presented at the Hong Kong Museum of Art and the civic centres of the Urban Council within two years. It is expected that presentation of the second Hong Kong Artists Series will enhance the public's appreciation of their artistic styles and knowledge of Hong Kong art.



The artist featured in this exhibition is Mr MAN Chi-wah. MAN Chi-wah was born in Hong Kong. He graduated from the Fine Arts Department of the Chinese University of Hong Kong in 1983 and has been serving as a secondary school teacher after graduation. In 1991, he was awarded a diploma in education by the School of Education, the Chinese University of Hong Kong. MAN Chi-wah excels in oil painting and his works have been selected for the "Contemporary Hong Kong Art Biennial Exhibition" several times. His early works are characterized by geometric abstraction and dark colour tones. The rational and hard-edged composition is later deconstructed by dynamic brushwork which give his new works an abstract expressionistic character. His recent oils are dominated by contrasting coloration and free play of brushwork. However, the monotypes best reveal his creativity, in which the fluidity of paint and the spirit of Oriental ink painting are emphasized. The layering and interweaving of colours together with the printed images enhance the variety of visual elements, while the splash and dripping paint charges the pictures with astonishing energy and emotional mood. The exhibition features

the recent oils and monotypes of the artist, disclosing his creative and experimental attempt in western painting. Here may I extend my warm congratulations to him and wish him further progress in his artistic pursuit.

I would like to express my sincere thanks to the Museum's Honorary Advisers who have given valuable advice and assistance in the realization of the second Hong Kong Artists Series. I would also like to thank members of the visual arts community in Hong Kong, who have participated and supported this event for the promotion of art in Hong Kong.

Gerard C C TSANG  
Chief Curator  
Hong Kong Museum of Art

# 傳 略

- 1959 生於香港
- 1983 畢業於香港中文大學藝術系
- 1991 獲香港中文大學教育學院教育文憑

## 展覽

- 1983 當代香港藝術雙年展 1983 · 香港藝術館
- 1984 U & V 作品展 · 香港藝術中心  
第一選擇展 · 香港藝術中心
- 1985 當代香港藝術雙年展 1985 · 香港藝術館
- 1986 香港青年藝術家聯展 · 台北  
U & V 作品展 · 香港藝術中心  
二十世紀現代繪畫展 (夏利豪藝術基金會)
- 1987 當代香港藝術雙年展 1987 · 香港藝術館  
現代藝術展 (夏利豪藝術基金會)
- 1988 香港現代藝術展 · 北京  
藝術化生活展覽 · 香港藝術中心
- 1989 當代香港藝術雙年展 1989 · 香港藝術館  
「五四」民主與科學藝術展覽 · 香港中華文化促進中心  
香港現代藝術展 · 香港中華文化促進中心
- 1990 現代藝術展 (夏利豪藝術基金會)
- 1992 當代香港藝術雙年展 1992 · 香港藝術館
- 1996 國際和平港日藝術交流展 · 香港會議展覽中心  
香港藝術家系列：文志華 · 上環文娛中心



## 作品收藏機構

- 香港中文大學
- 香港藝術館
- 夏利豪藝術基金會



# BIOGRAPHY

- 1959 Born in Hong Kong  
1983 B.A. ( Major : Fine Arts ), the Chinese University of Hong Kong  
1991 Dip. in Education ( Major : Fine Arts ), School of Education, the Chinese University of Hong Kong

## Exhibitions

- 1983 **Contemporary Hong Kong Art Biennial Exhibition 1983** · Hong Kong Museum of Art  
1984 **Works of U & V** · Hong Kong Arts Centre  
**First Choice Exhibition** · Hong Kong Arts Centre  
1985 **Contemporary Hong Kong Art Biennial Exhibition 1985** · Hong Kong Museum of Art  
1986 **Exhibition of Hong Kong Young Artists** · Taipei  
**Works of U & V** · Hong Kong Arts Centre  
**20th Century Modern Painting Exhibition ( Philippe Charriol Foundation )**  
1987 **Contemporary Hong Kong Art Biennial Exhibition 1987** · Hong Kong Museum of Art  
**Modern Art Exhibition ( Philippe Charriol Foundation )**



4

- 1988 **Exhibition of Hong Kong Modern Art** · Beijing  
**Living with Art** · Hong Kong Arts Centre  
1989 **Contemporary Hong Kong Art Biennial Exhibition 1989** · Hong Kong Museum of Art  
**The "May-Fourth" Democracy and Science Art Show** · The Hong Kong Institute for Promotion of Chinese Culture  
**Exhibition of Hong Kong Modern Art** · The Hong Kong Institute for Promotion of Chinese Culture  
1990 **Modern Art Exhibition ( Philippe Charriol Foundation )**  
1992 **Contemporary Hong Kong Art Biennial Exhibition 1992** · Hong Kong Museum of Art  
1996 **World Peace Art Exhibition** · Hong Kong Convention and Exhibition Centre  
**Hong Kong Artists Series : Man Chi-wah** · Sheung Wan Civic Centre

## Works Collected by

The Chinese University of Hong Kong  
Hong Kong Museum of Art  
Philippe Charriol Foundation

# 展品目錄

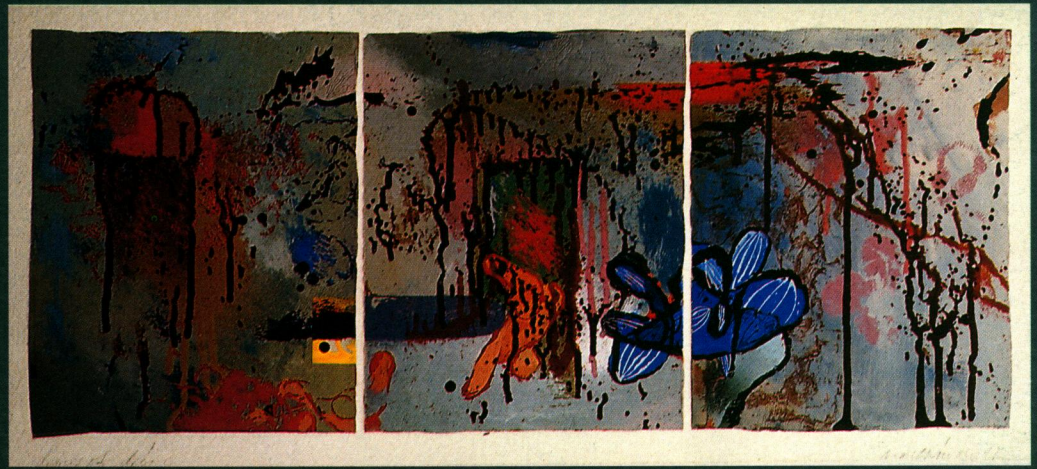
- |  |                                     |   |  |
|--|-------------------------------------|---|--|
| 1. 自畫像 1996 1996<br>油彩布本<br>124 x 151 厘米 | 7. 魚人 1994<br>獨印布本<br>41 x 51 厘米    | 13. 風景 1994<br>獨印布本<br>25.5 x 81 厘米     | 26. 風景 1993<br>獨印紙本<br>20.5 x 25 厘米    |
| 2. 萬國會話 1996<br>油彩布本<br>132.5 x 163 厘米   | 8. 船首 1994<br>獨印布本<br>41 x 51 厘米    | 14. 自由連合 1993<br>獨印布本<br>25 x 20.5 厘米   | 27. 片斷 1993<br>獨印紙本<br>15 x 15 厘米      |
| 3. 逐出 1995<br>顏料布本<br>127 x 169 厘米       | 9. 漫步 1994<br>獨印布本<br>41 x 51 厘米    | 15. 破曉 1993<br>獨印紙本<br>20 x 51.5 厘米     | 28. 內 / 外 1993<br>獨印紙本<br>15 x 15 厘米   |
|  |                                     | 16. 有格子的風景 1993<br>獨印布本<br>41 x 51 厘米   | 29. 退潮 1993<br>獨印紙本<br>15 x 15 厘米      |
|  |                                     | 17. 拱 1993<br>混合媒介紙本<br>53 x 73 厘米      | 30. 沼澤 1992<br>獨印紙本<br>15 x 15 厘米      |
|  |                                     | 18. 黑色風景 1993<br>獨印紙本<br>51 x 49 厘米     | 31. 賣藝者 1992<br>混合媒介瓷磚<br>15 x 15 厘米   |
|  |                                     | 19. 山的呼吸 1993<br>獨印布本<br>51 x 41 厘米     | 32. 浮動的尾巴 1991<br>混合媒介瓷磚<br>15 x 15 厘米 |
|  |                                     | 20. 風景 1993<br>獨印紙本<br>20.5 x 25 厘米     | 33. 進入視距 1991<br>混合媒介瓷磚<br>15 x 15 厘米  |
|  |                                     | 21. 有鏡子的室內 1993<br>獨印紙本<br>31.5 x 35 厘米 | 34. 十二行綫 1991<br>混合媒介石磚<br>15 x 15 厘米  |
|  |                                     | 22. 慾望的度數 1993<br>獨印紙本<br>25.5 x 62 厘米  | 35. 翅 1991<br>混合媒介瓷磚<br>15 x 15 厘米     |
|  |                                     | 23. 黃臉 1993<br>獨印紙本<br>21 x 28 厘米       | 36. 遺跡 1991<br>混合媒介瓷磚<br>15 x 15 厘米    |
| 4. 綫的接觸 1995<br>獨印紙本<br>25.5 x 40.5 厘米   | 10. 失去中心 1994<br>獨印布本<br>51 x 41 厘米 | 24. 風景 1993<br>獨印布本<br>20.5 x 25 厘米     | 37. 二人 1987<br>油彩布本<br>165 x 129 厘米    |
| 5. 人體量度 1994<br>獨印紙本<br>20.5 x 25 厘米     | 11. 風景 1994<br>獨印紙本<br>39 x 56 厘米   | 25. 風景 1993<br>獨印紙本<br>25.5 x 41 厘米     |  |
| 6. 紅的接觸 1994<br>獨印紙本<br>25.5 x 62 厘米     | 12. 山 1994<br>獨印紙本<br>20.5 x 25 厘米  |   |  |



# LIST OF EXHIBITS

- |  |   |  |  |
|--|---|--|--|
| 1. <b>Self Portrait</b> 1996 1996<br>Oil on canvas<br>124 x 151 cm                         | 7. <b>The Fishman</b> 1994<br>Monotype transfer on canvas<br>41 x 51 cm                 | 13. <b>Landscape</b> 1994<br>Monotype transfer on canvas<br>25.5 x 81 cm             | 26. <b>Landscape</b> 1993<br>Monotype transfer on paper<br>20.5 x 25 cm          |
| 2. <b>Universal Conversation</b> 1996<br>Oil on canvas<br>132.5 x 163 cm                   | 8. <b>Bowsprit</b> 1994<br>Monotype transfer on canvas<br>41 x 51 cm                    | 14. <b>Freely United</b> 1993<br>Monotype transfer on canvas<br>25 x 20.5 cm         | 27. <b>Fragment</b> 1993<br>Monotype transfer on paper<br>15 x 15 cm             |
| 3. <b>The Expulsion</b> 1995<br>Pigments on canvas<br>127 x 169 cm                         | 9. <b>Wandering</b> 1994<br>Monotype transfer on canvas<br>41 x 51 cm                   | 15. <b>The Dawn</b> 1993<br>Monotype transfer on paper<br>20 x 51.5 cm               | 28. <b>Inside / Outside</b> 1993<br>Monotype transfer on paper<br>15 x 15 cm     |
|  |   | 16. <b>Landscape with Checkers</b> 1993<br>Monotype transfer on canvas<br>41 x 51 cm | 29. <b>Ebb Tide</b> 1993<br>Monotype transfer on paper<br>15 x 15 cm             |
|  |   | 17. <b>The Arch</b> 1993<br>Mixed media on paper<br>53 x 73 cm                       | 30. <b>The Swamp</b> 1992<br>Monotype transfer on paper<br>15 x 15 cm            |
|  |   | 18. <b>Black Landscape</b> 1993<br>Monotype transfer on paper<br>51 x 49 cm          | 31. <b>Acrobats</b> 1992<br>Mixed media on ceramic tile<br>15 x 15 cm            |
|  |   | 19. <b>Breath of the Mountains</b> 1993<br>Monotype transfer on canvas<br>51 x 41 cm | 32. <b>A Floating Tail</b> 1991<br>Mixed media on ceramic tile<br>15 x 15 cm     |
|  |   | 20. <b>Landscape</b> 1993<br>Monotype transfer on paper<br>20.5 x 25 cm              | 33. <b>Into Focus</b> 1991<br>Mixed media on ceramic tile<br>15 x 15 cm          |
|  |   | 21. <b>Interior with a Mirror</b> 1993<br>Monotype transfer on paper<br>31.5 x 35 cm | 34. <b>Twelve Lines</b> 1991<br>Mixed media on stone<br>15 x 15 cm               |
|  |   | 22. <b>Degree of Desire</b> 1993<br>Monotype transfer on paper<br>25.5 x 62 cm       | 35. <b>Wings</b> 1991<br>Mixed media on ceramic tile<br>15 x 15 cm               |
| 4. <b>Encounter with Lines</b> 1995<br>Monotype transfer on paper<br>25.5 x 40.5 cm        | 10. <b>Lost of Centre</b> 1994<br>Monotype transfer on canvas<br>51 x 41 cm             | 23. <b>A Yellow Face</b> 1993<br>Monotype transfer on paper<br>21 x 28 cm            | 36. <b>Historical Ruins</b> 1991<br>Mixed media on ceramic tile<br>15 x 15 cm    |
| 5. <b>Measurement of the Human Body</b> 1994<br>Monotype transfer on paper<br>20.5 x 25 cm | 11. <b>Landscape</b> 1994<br>Monotype transfer on paper<br>39 x 56 cm                   | 24. <b>Landscape</b> 1993<br>Monotype transfer on canvas<br>20.5 x 25 cm             | 37. <b>A Couple (Homage to Grant Wood)</b> 1987<br>Oil on canvas<br>165 x 129 cm |
| 6. <b>Encounter with the Reds</b> 1994<br>Monotype transfer on paper<br>25.5 x 62 cm       | 12. <b>Landscape with a Mountain</b> 1994<br>Monotype transfer on paper<br>20.5 x 25 cm | 25. <b>Landscape</b> 1993<br>Monotype transfer on paper<br>25.5 x 41 cm              |  |





22



21

## PRODUCTION TEAM

### Exhibition Research and Editorial

Gerard C.C. TSANG	Chief Curator
TANG Hoi-chiu	Curator ( Modern Art )
LEE Man-chiu	Assistant Curator I ( Education )
Anne S.H. LAM	Assistant Curator II ( Education )
Wendy M.L. WOO	Assistant Curator II ( Education )
Wilson K.H. SHIEH	Research Assistant

### Exhibition Design & Pamphlet Production

Art 3 Design Limited

本刊物由香港市政局於一九九六年首次編印。  
 香港藝術館編製。  
 版權屬香港市政局所有 —— 一九九六年。  
 版權所有，未經許可不得翻印、節錄或轉載。  
 香港市政局負責為香港約三百萬市區居民提供文康市政服務。

First published by the Urban Council of Hong Kong, 1996.

Produced by the Hong Kong Museum of Art.

Copyright © 1996 Urban Council of Hong Kong

All rights reserved.

The Urban Council of Hong Kong is responsible for the provision of municipal services to some three million people in the urban areas of Hong Kong.



6