



Performing Arts  
Division –  
Technical Support  
Section

**Hong Kong City Hall**  
G/F, City Hall Low Block,  
5 Edinburgh Place,  
Central, Hong Kong

Phone  
852-2921 2840

Fax  
852-2877 0353

**CONTACTS**

**Gladys Fong**  
Senior Manager (CS/CH)  
Direct Line  
852- 2921 2888

**Jan Lau**  
Manager (Hiring  
Management)  
Direct Line  
852- 2921 2835  
Fax Line  
852- 2524 5898  
852- 28770353

**Louisa Chan**  
Resident Technical  
Manager(CH)  
Direct Line  
852- 2921 2802  
Fax Line  
852- 2537 6307

**GENERAL SET-UP**

*Theatre operates on a 'bare-walls' touring policy. That is, all equipment is normally set-up and struck within the booking period. Hires are reminded to allow sufficient preparation time to hang theatre masking, rig all overhead stage lighting and set up sound system.*

**Hong Kong City Hall – Theatre**  
**FULL Technical Information**

V. 2011.3 – Last Update November 11

Page 1 of 8



Hong Kong City Hall Theatre, is designed primarily for stage presentations with or without orchestra and acoustically best suited for the spoken voice, but it is also used frequently for chamber music recitals and cinema shows.

**DIRECTIONS**

MTR:  
Island Line, Central Station, Exit J  
Airport Express or Tung Chung Line, Hong Kong Station, Exit A

Freeway (From W to E):  
Connaught Road Central →  
Edinburgh place (turn left on  
City Hall Wilson Car Park)

Freeway (From E to W):  
Connaught Road Central →  
Connaught Road Place (turn  
right on Jardine House) →  
Connaught Road Central →  
Edinburgh place (turn left on  
City Hall Wilson Car Park)



**LOADING**

Rolling gate at stage right:  
2.80 x 3.60m (W x H)

Easy access to the scenery dock for delivery of scenery as lorries can back up to the roller gate and unloaded on stage level, and 1.20m above street level

Stage Entrance:  
Backstage entrance

**PARKING**

Permit required





**AUDITORIUM**



**Max. Total Seating: 463**

Orchestra Pit. Formed by removing  
forestage traps Capacity of 8-15  
musicians.

No removal of Seats is needed.

**PROSCENIUM**

Frame dimension

9.62 x 5.08m (W x H)

**STAGE WIDTH**

Centreline to stage right

9.50m

Centreline to stage left

12.00m

Down stage

11.00m

Between fly floors

17.00m – 7.50(SR) / 9.50(SL)

**STAGE DEPTH**

Rear of Proscenium to backwall

9.30m

Rear of Proscenium to forestage edge

3.00m

**STAGE HEIGHT**

Clear under SR fly floors

5.00m

Clear under SR side Lx ladders

3.10m

Clear under SL fly floors

5.00m

Clear under SL side Lx ladders

3.10m

Clear under grid

12.40m

Maximum counterweight bar flying height

11.00m

Above Auditorium

1.02m

**FORESTAGE / ORCHESTRA PIT**

**ORCHESTRA PIT**

Formed by removing forestage traps

Dimensions

9.30 x 2.40 x 1.97m (W x D x H)

Capacity

8 – 15 musicians

Pit setup provision with conductor podium, platform, musician chairs, stools, music stands, and music lights

**STAGE FLOOR**

Flat black surface hardboard

500kg/m<sup>2</sup> SWL

**Traps**

2 traps: 1 at CS, 1 at apron. Under stage 1.80m

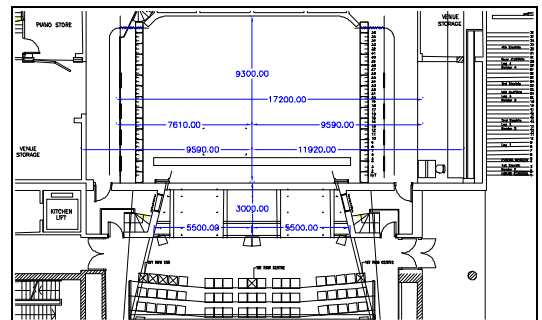
Footlight trough at DS

**Cyclorama wall**

Cyclorama wall is permanent with curvature at right and left side. It is of white plaster and has a smooth surface.

**SIDE STAGE**

Very limited area





## REAR STAGE

Not available

**The fire shutter is treated as a safety curtain by FSD and cannot be obstructed by scenery, equipment or stage wagon in production.**

## STORAGE SPACE

Scenery dock is at stage right 6.25 x 5.03m (W x H)  
Reserved as venue's store (included in Sc. Dock area) 3.25 x 5.03m (W x H)

## CROSSOVER

Corridor behind stage

## RIGGING

### **House Curtain** (Golden yellow)

Bar 1, operated both fly in and out; draw left and right manually

### **Cinema screen**

Bar 4

Bar 5 is obstructed by the cinema screen

### **Stage Lighting Bar**

Capacity 230kg SWL  
Length 13.00m  
Standard lighting bars Bar 3, 14, and 23  
Cyclorama lights Bar 32

### **Rigging System**

Single purchase counterweights 36  
Counterweight frame located at stage left  
Bar diameter (generally) 60mm (upper bar)  
48mm (lower bar)  
Bars distance (generally) 0.20m  
Capacity 230kg SWL  
Length 13.00m  
Pinrail None  
Side Bars None  
Point Hoists None

## STAGE EQUIPMENT

### **Stage Drapery**

Black masking	legs	10	All flat	3.00 x 5.60m	General rig (W x H)
	borders	5	All flat	13.00 x 2.50m	General rig (W x H)
	half tabs	2	All flat	7.00 x 6.00m	Mid Curtain
	tabs	2	fullness	13.00 x 6.00m	Rear Curtain

\*Tabs installed with 100% fullness with 2 ties to each runner. It can be used as flat or semi-draped clothes by tying director to bar.

Projection screen (Front / Back) 1 4.00 x 3.00m

**Acoustic shells** 9 pcs.

### **Orchestra Riser**

Aluminum frame platform. Chair rails and guard rails available. No drilling or painting.  
2.4 x 1.2m (W x D) 3 203mm(H)  
3 407mm(H)  
3 610mm(H)

**Choir Riser** (3 or 4 steps) for approx. 75persons

**Orchestra Chair** 60



<b>Music Stand</b>		30	
<b>Conductor's Podium</b>		1	0.96 x 0.82 x 0.15m (W x L x H)
<b>Conductor's Stand</b>		1	
<b>High Stool</b>		5	(Share with Concert Hall)
<b>Ceremony Chair</b>		10	
<b>Podium</b>		1	0.76 x 0.45 x 1.22m (W x D x H)
<b>Table</b>		5	1.22 x 0.76 x 0.74m (W x D x H)
<b>Table Cloths</b>			
<b>Dancing Tiles</b> <i>for dance floor use only</i>			Black for main stage (Please allow time to lay the ties during your booking time)
<b>Stage Carpet</b> <i>for Chinese Opera use only</i>	Green	2	4.50 x 5.50m
<b>Instruments</b>	Concert Grand Piano	2	Steinway & Sons (Extra charge is needed)
	Harpichord	1	William Down (Share with HKCC and extra charge is needed)
	Harp	1	Lyon & Healy Harps (Share with Concert Hall and extra charge is needed)
	Timpani	1 set of 4	Premier Percussion (23", 26", 29", 32" Share with Concert Hall and extra charge is needed)
	Timpani	1	
<b>Lift and Ladder</b>			
Cougar lifts (7.00m Height)		1	<i>operated by competent person &amp; prior approved by venue management only</i>
Counerweights			Available as requested

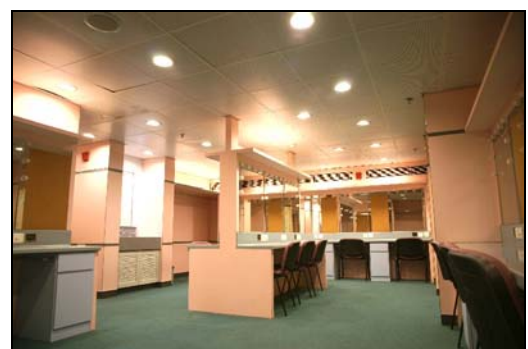
**DRESSING ROOMS**

Stage level    **T1:** accommodates 6-8 persons  
                       **T2:** accommodates 15 persons  
                       **T3:** accommodates 20-25 persons

*All dressing rooms fitted with private toilet and shower*

**RUNNING WARDROBE**

Washing machines, dryers, located at dressing room T1  
*Irons & boards and steamers can be loaned from Stage Management Department*



**LIGHTING**

<b>Dimmers</b>	118 nos. of 3k, located at back stage corridor.
<b>Control Board</b>	Strand – 520i, with full backup control facilities, Strand OS operating software, located in Lighting Control Room at the back of auditorium right.
<b>Remote Control</b>	Strand – wireless remote control PDA
<b>Houselights</b>	Dimmer controlled. Take-control available in Lighting Control Room.



<b>Circuits</b>	118 x 3kW production lighting circuits, fixed wiring type, all circuits are terminated to 15A socket outlets to UK standard on the production lighting boxes, distributed at various locations throughout the Stage and lighting bridges.				
<b>Additional Power</b>	220/380 Volt ; 3-phase/4 wire, 60A/phase, located in US Left side stage wall c/w. The hirer may bring-in your electrical equipment and connect to the additional power source at side stage subject to the required electrical works must be conducted by the local registered electrical workers. The hirer shall supply adequate circuit protective devices for your own electrical installation. 13A wall-mounted socket outlets to UK standard are provided on the stage.				
<b>Front of House Positions</b>	FOH Lighting Bridge, 10.36m throw at 34.61 degree FOH Lighting Bridge, 8.42m throw at 44.32 degree (Apron)				
<b>Profiles</b>	750W	ETC	Source 4 (15/30)	16	Top sides of apron
	750W	ETC	Source 4 (25/50)	18	Light Bridge
<b>Fresnels</b>	1kW	Selecon	Rama	12	Bar 3
	1kW	Selecon	Rama	8	Bar 14
	1kW	Selecon	Rama	9	Bar 23
<b>Cyclorama light</b>	1.25kW	Selecon	Aurora 10 AUCYC 4L	4	Top (Bar 32)
<b>Ground Row</b>	625W	Selecon	Aurora GR 4-way Linear	4	Bottom
<b>Foot light</b>	150W	Strand	8 Compartment	4	
<b>Follow Spots</b>	1.8kW	Robert Juliat	FLO	2	Auditorium back
<b>Effects Lantern</b>	750W	ETC	Source 4 70 Profile spot	2	Bar 32, Optical effect moving drive
	Effects (Max. 2)		Fire	2	
			Cloud	2	
			Spiral (rain)	2	
			Radial (water)	2	
<b>Smoke generator</b>					As required from pool stock
<b>Strobe Light</b>					As required from pool stock
<b>UV light</b>					As required from pool stock
<b>Colour Scroller</b>		Strand	Colour changer	14 (for 1kw Fresnel)	
<b>Others</b>	Side light ladder			8	
	Side light tower		(Share with Concert Hall)	8	
Tower equipment setup:	5 (top)		1kW Strand Optique 15/42		220cm*
	4		1kW Strand Cantata Fresnel		180cm*
	3		1kW PAR 64 – CP61		135cm*
	2		1kW Strand Optique 15/42		90cm*
	1 (bottom)		1kW Strand Cantata 26/44		45cm*
	<b>* = Height the equipment from the centre of lens to the floor</b>				
	Light stands				As required from pool stock

**Supply of above equipment subject to availability on receipt of a lighting plan.**

**Equipment available does vary slightly according to repair, maintenance, etc. Check with Technical Manager for any changes.**

**Productions with Lighting Designer should contact the Technical Manager for pool equipment list details.**

**Hirer will be provided with simple white lighting only, from available hung equipment, if only booking 2 hours for light focus and plotting sessions.**



<b>SOUND</b>		
<b>Sound System</b>	Main central cluster :	
	EM Acoustics EMS152	2
	Each side of proscenium :	
	EM Acoustics EMS152w	1 on each side
	EM Acoustics EMS i-12 Subwoofer	1 on each side
	Front Fill Speakers :	
	EM Acoustics EMS i-2	4
<b>Main Control Console</b>	Midas Heritage 1000 mixing console	
	Mono inputs	28
	Stereo inputs	4
	Aux outputs	10
	Group outputs	10
	Matrix outputs	8
	Control room at the back of auditorium	
<b>Microphone tie line</b>	At hanging bars	4
	Channel Multi-core outlets at stage left	16
	Channel Multi-core outlets at stage right	16
<b>Accessory Electronics (Pre-aligned, not loose equipment)</b>	Klark Teknik DN 9848 loudspeaker processor	1
	Klark Teknik DN 9340 equalizer	1
	T.C. electronics M3000 studio reverb processor	1
	Lexicon PCM81 digital effect processor	1
	BSS DPR 402 compressor/limiter	2
<b>Microphones</b>	B&K 4009 A-B stereo recording microphone system	2
	Crown PCC 160	3
	AKG C414B-ULS	3
	Neumann KM 183	2
	Neumann KM 184	4
	Sennheiser MD 421-II	2
	Shure MX412	2
	Shure Beta 58	4
	Shure SM 57	4
	Shure PG 58	2
<b>Wireless Microphone</b>	Sennheiser UHF SKM 5000 hand-held type	8
	Sennheiser UHF SK 50 body-pack type	8
	<b>Max. 8 units with a min. booking of 2 sessions (extra charge)</b>	
<b>Stage Monitors</b>	Nexo PS15	6
	Martin WM 0.5	2
	Montarbo M11A	2
	Yamaha S4115H MKII	2
<b>Cassette</b>	Tascam 122 MK III cassette recorders	2
<b>CD</b>	Denon DN C-635 CD player	2
<b>Mini-Disc</b>	Tascam MD-801R MK II mini-disc recorder	2
<b>Digital Audio Tape</b>	Sony DAT PCM R-700 DAT recorder	1
<b>CD Recorder</b>	HHB CDR-882 Dualburn CD Recorder	2
<b>VCR</b>	JVC HR-S5980 (CCTV recording)	1
	JVC HR-S5800AM (CCTV recording)	1
<b>ADDITIONAL</b>	Flown Cinema Screen	Bar 4



**FACILITIES**

The distance between the projection windows and the centre of the screen is 21.4m  
 Simplex 35mm film projectors  
 EIKI EX-9100 16mm film projectors  
 Dolby surround sound system  
 1 CINEMECCANICA 70 x 70mm glass slide XENON lamp projector with 21 slide holders for language sub-title slides

**COMMUNICATIONS**

Stage managers control panel at stage left  
 Dual channels production communication systems for stage, lighting and sound  
 Paging and show relay system  
 Cue light system  
 Close Circuit TV system  
 Production desk can be set at the middle of the stall

**The above equipment is not-fix-installed, their availability has to be checked prior to booking period. All required equipment will be set-up during the booking sessions, please allow extra time for equipment set-up before performance or rehearsal.**

**POOLED LIGHTING EQUIPMENT LIST**  
**for Productions with a Lighting Designer**

				<u>Theatre</u>	<u>Concert Hall</u>
<b>Profiles</b>	1kW	Strand	Cantata 26/44	10	10
	1kW	Strand	Optique 15/42	22	22
	750W	ETC	Source 4 zoom 15/30	20	18
	1kW	G&E	Par 64 (CP61)	20	12
<b>Fresnels</b>	2kW	Selecon	Arena Theatre F	3	3
	1kW	Strand	Cantata F	10	10
<b>Pebble Convex</b>	1kW	Strand	Cantata PC	10	10
<b>Flood light</b>	500W		Coda 500/ 4	6	6
<b>Effects Lantern Effects</b> (Max. use of 2)	750W	ETC	70° Profile Spot		2
			Fire		2
			Cloud		2
			Spiral (rain)		2
			Radial (water)		2
<b>Music light</b>	25W			35	35
<b>Light stand</b>				8	8
<b>Floor stand</b>				12	12
<b>Light tower</b>			1.90m height	4	4
<b>Gobo holder</b>		Source 4	A size	10	
			B size	4	
		Cantata Profile	A size	10	
			B size	10	
		Optique Profile	M size	10	



<b>Iris</b>		Source 4		8	
		Optique			
		/Cantata		6	
		Profile			
<b>Strobe light</b>		Martin	Atomic 3000 DMX	2	2
<b>UV Light</b>	400W	Wildfire	LT-400F	2	2
<b>Smoke machine</b>		Lightwave	F-100	2	
		Martin	Jem ZR-33	2	
<b>Slide projector</b>		Xenon	S-AV-2050	2	
		Carousel			
			253mm lens	1	
			70-120mm lens	2	
			85-210mm lens	2	
		Kodak	Tray	4	
		Kodak	9010 / 9020	2	1
<b>Overhead projector</b>		EIKI	4410H	2	
<b>Portable screen</b>			1.80 x 1.80m		1 (On stand)
			2.40 x 2.40m		1 (On stand)

**EQUIPMENT ON THIS LIST IS ALLOCATED ON A FIRST COME FIRST SERVED BASIS ON PRESENTATION OF A COMPLETED LIGHTING PLAN.**

**DO NOT ASK TO RESERVE ALL PENDING DESIGN SUBMISSION - SUCH REQUESTS WILL NOT BE ENTERTAINED!**

**Equipment available does vary slightly due to repair, maintenance, etc. Check with Technical Manager for any changes.**

**POOLED SOUND EQUIPMENT LIST**  
**for Productions with a Sound Designer**

<b>Microphone pool</b>	Neumann KMR-82i shotgun	4
	AKG D112	3
	AKG C418PP	3
	AKG C419PP	2
	AKG C411	4
	Shure 565SD	2
	Shure Beta 87	2
	Shure SM94	3
<b>LCD Projector</b>	Sanyo PLC-XP 46 (4100 ANSI Lumens)	1
	Sanyo PLC-XP 55 (4500 ANSI Lumens)	1
	Sanyo PLC-XP 100 (6500 ANSI Lumens)	1

**EQUIPMENT ON THIS LIST IS ALLOCATED ON A FIRST COME FIRST SERVED BASIS ON PRESENTATION OF A COMPLETED SOUND DESIGN.**

**DO NOT ASK TO RESERVE ALL PENDING DESIGN SUBMISSION - SUCH REQUESTS WILL NOT BE ENTERTAINED!**

**Equipment available does vary slightly due to repair, maintenance, etc. Check with Technical Manager for any changes.**