



Performing Arts
Division –
Technical Support
Section

**Hong Kong Cultural
Centre**

10 Salisbury Road
Tsim Sha Tsui,
KLN, HK
Phone
852-2734 2009

Fax
852-2739 0066

CONTACTS

Elida Chiang

Senior Manager
(HKCC/Venue)
Direct Line
852- 2734 2821

Tina Cheng

Manager (House Management)
Direct Line
852- 2734 2804

Peter Li

Resident Technical
Manager(HKCC)
ppkli@lcsd.gov.hk
Direct Line
852- 2734 2814
Fax Line
852- 2739 0066

GENERAL SET-UP

The Studio Theatre operates on a 'bare-walls' touring policy. That is, all equipment is normally set-up and struck within the booking period. Hirers are reminded to allow sufficient preparation time to hang theatre masking, rig all stage lighting and set up audio system.

Hong Kong Cultural Centre – Studio Theatre

FULL Technical Information

V. 2011.3 – Last Update February 11

Page 1 of 9



The HKCC Studio Theatre is a flexible space with multiple seating configurations for a variety of productions. Capacity varies between 307 and 500. Primary use is for drama, but dance and music performances as well as recitals and seminars are also presented.

DIRECTIONS

MTR:

Tsuen Wan Line, Tsim Sha Tsui Station, Exit E

East & West Rail Line, Tsim Sha Tsui East Station, Exit J

Ferry:

Tsim Sha Tsui Star Ferry

Bus:

Hong Kong Cultural Centre Bus Stop: 1, 1A, 2, 6, 6A, 7, 8, 8A, 8P, 9

Tsim Sha Tsui Star Ferry Terminus: 1, 1A, 2, 5A, 5C, 6, 6A, 7, 8, 8A, 8P, 9, 28, 234X, 234P

Nearby Public Car Parks:

Car Parks in Ocean Terminal, Middle Road Wilson Car Park, New World Centre Car Park and Sogo Car Park



LOADING

Cargo lift from ground floor: Door dimension:
2.80 x 1.90m (W x H)
3.59m (Diagonal)

Lift Dimension:
3.20 x 2.20m (W x H)
1.83m (Depth)

Storage Area:
Limited area

Stage Entrance:
Same entrance as audience,
from Venue Foyer 4th floor



PARKING

Permit required



AUDITORIUM



Max. Total Seating:

- Arena Stage: 496 seats
- Thrust Stage: 303 seats
- Transverse Stage: 382 seats
- End Stage: 321 seats

Room (no seats)

Gallery to Gallery

- Width: 13.35m
- Depth: 24.11m
- Area: 325.49m²

Wall to Wall:

- Width: 18.00m
- Depth: 27.68m
- Area: 499.62m²

ARENA STAGE (seating on four sides of the stage)

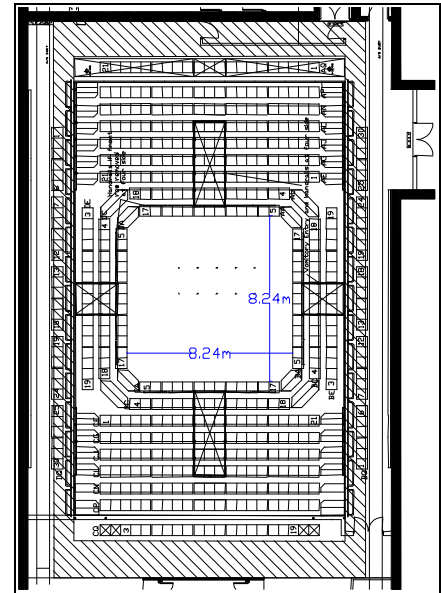
- Width 8.24m
- Depth 8.24m
- Area 67.90m²

Vomitory entries can be made available with a loss of 9 or 18 seats. Provided with masking flats and entries flush to the on-stage edge of two gallery sides.

ARENA SEATING ARRANGEMENT

West Tier	150
(West Vomitory 18)	
North Tier	45
(North Vomitory 9)	
East Tier	154
(East Vomitory 18)	
South Tier	45
(South Vomitory 9)	
Balcony West	21
Balcony North	30
Balcony East	21
Balcony Southarea	30

Total 496



Arena stage

THRUST STAGE (seating on three sides of the stage)

- Stage width overall (wall to wall) 18.00m
- Width between galleries 13.35m
- Width between seats 8.24m
- Overall stage depth 14.89m
- Thrust depth 5.35m
- Stage depth 9.54m
- Area 149.00m²

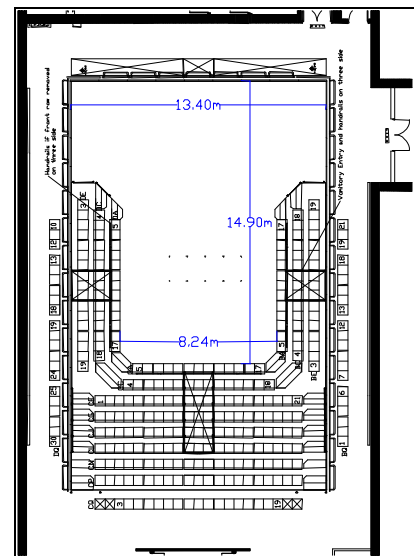
Vomitory entries can be made available with the loss of 9 or 18 seats.

Provided with masking flats and entries flush to the on-stage edge of three gallery sides.

Additional legs, borders and cyclorama cloth, as required, would be set and struck within the booking period.

THRUST SEATING

West Tier	150
(West Vomitory 18)	
North Tier	45
(North Vomitory 9)	



Thrust stage



South Tier	45
(South Vomitory 9)	
Balcony West	21
Balcony North	21
Balcony South	21
Total 303	

TRANSVERSE STAGE (seating on opposite side of the stage area)

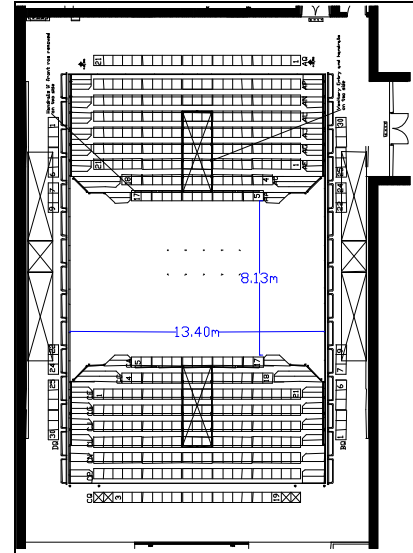
Stage width	13.40m
Depth between seating	8.13m
Area	108.90m ²

Provided with masking flats and entries flush to the on-stage edge of two gallery sides.

TRANSVERSE SEATING ARRANGEMENT

West Tier	150
(West Vomitory 18)	
East Tier	154
(East Vomitory 18)	
Balcony West	21
Balcony East	21
Balcony North	18
Balcony South	18
Total 382	

NB : 12 seats on both the North and South Gallery are not facing the performance area.



Transverse stage

END STAGE (seating on one side of the stage)

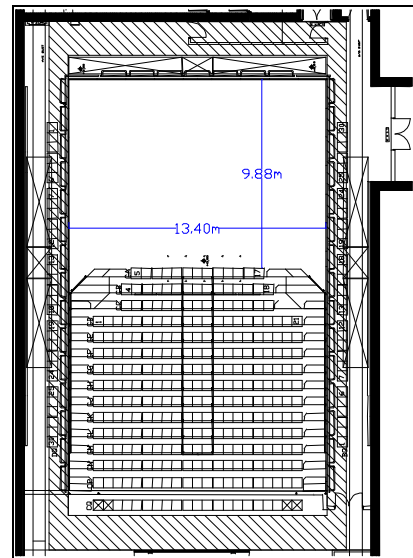
Stage width overall (Wall to Wall)	18.00m
Width between galleries	13.40m
Stage depth	9.50m
Area	132.39m ²

Provided with masking flats and entry points flush to the on-stage edge of gallery. Additional drape proscenium, curtain, legs, borders and cyclorama, as required, would be set and struck within the booking period.

END SEATING

Main Tier	269
Balcony West	21
Balcony North	15
Balcony South	16
Total 321	

NB : 6-9 seats on both the North and South Gallery are restricted when the house curtains are in use.



End stage

Please note that any unused seating units, masking flats and other stage facilities are stored in designated areas behind the masking flats. Any units moved for a specific production reason must be replaced within the booking period.

STAGE HEIGHT

Underside of lighting bridges	8.20m
Underside of grid	9.20m
Underside of stage right gallery	3.40m
Underside of stage left gallery, up stage	3.20m
Underside of stage left gallery, down stage	3.40m
Clear height under stage right gallery	3.00m
Clear height under stage left gallery	2.00m



STAGE FLOOR

Flat black surface hardboard 450kg/m² SWL
Black masking flat
Grave trap 3.00m x 1.00m (For End Stage, grave trap cannot be used)

SIDE STAGE

Not available

REAR STAGE

Not available

STORAGE SPACE

Very Limited area next to cargo lift

CROSSOVER

Passage behind stage and/or seating

RIGGING

Bar Diameter	49mm
Spotted hemp sets as required for scenery	8
Flexible Point Hoists – Fixed speed electric	8
Capacity	100kg SWL
Chain Hoists (set up & dismantled within hirer's booking period) –	6
Fixed speed electric	
Capacity	500kg SWL

Chain and point hoists are not available for flying cues in performance

Extra lighting bars must be hung from chain or point hoists

Check with Technical Manager for details and requirements

STAGE EQUIPMENT

Masking Black cyclorama cloth with U-shaped track and back projection screen
House curtain (set & struck only within booking period)
Black soft masking – legs, borders, track
Braces and weights

Lifting Equipment Cougar lift, aluminum ladders

Risers 3 step choir risers for approx. 60 persons. (share with Grand Theatre)

Chairs Musician chairs, high stools and music stand

Instruments U-1, Upright Piano 1 Yamaha

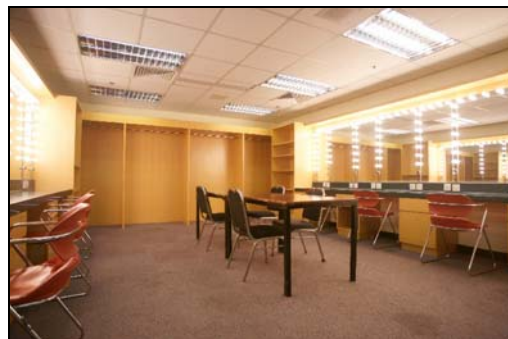
DRESSING ROOMS

Level 4	Ladies	12 spaces
Level 5	Gentlemen	12 spaces

Both rooms with attached toilets, shower and washbasins.
1 washing machine and 1 dryer at level 4 dressing room.

RUNNING WARDROBE

Irons & boards and steamers can be loaned from Resident Stage Management



Contact Technical Manager for any additional equipment enquiries.

LIGHTING

Dimmers 240 nos. of 2.5kW; locating at next to the control room



Control Board	240 way Strand 520 Control Console in control room at technical gallery			
Houselights	Dimmer controlled from the control room			
Additional Power	200Amp -3phase x2, at Up Stage The hirer may bring-in your electrical equipment and connect to the additional power source at the back stage of the theatre subject to the required electrical work must be conducted by the local registered electrical workers. The hirer shall supply adequate circuit protective devices for your own electrical installation. 13A wall-mounted socket outlets to UK standard are provided on the stage.			
Profiles	750W	ETC	Source Four 15/30	38
	1kW	Strand	Harmony 15/28	50
		ETC	Source Four 15/30	18 Side light towers
Fresnels	750W	ETC	Source 4 (PAR Nel)	20
	2kW	Arena	Selecon	12 Side light towers
	1kW	Rama	Selecon	12 Side light towers
	1kW	Strand	Harmony F	20
Colour Changers		Strand	Colour call	16
Beamlights	1kW	Strand	PAR64 CP/60	16
Cyclorama	1.25kW	Strand	Iris 1	16 Top
Groundrow	625W	Strand	Pallas 4	8 Bottom
Effects	2.5kW	Strand	Tocatta EP	4
Projectors				
Effects disc			Fleecy clouds	2
			Stormy clouds	2
			Thunder clouds	2
			Rain	2
			Snow	2
			Running water	2
			Smoke	2
			Fire	2

Follow Spots In this venue it is best to use one of the above luminaries to avoid a big difference in light quality between follow spots and the lighting rig. However, 2 x 1.2kW Pani HMV-1200I are available.
Any luminaries used as a follow spot or use of the Pani units incurs an extra charge.

Stands As required from pool stock

Others	Side lighting towers		6 pre-rigged	
	Tower equipment setup:	5(top)	Souce4 15/30	2000mm*
		4	Selecon 1k F	1555mm*
		3	Selecon 1k F	1100mm*
		2	Souce4 15/30	700mm*
		1 (bottom)	Souce4 15/30	250mm*

* = Height the equipment from the centre of lens to the floor

Supply of above equipment subject to availability on receipt of a lighting plan.

Equipment available does vary slightly according to repair, maintenance, etc. Check with Technical Manager for any changes.

Productions with Lighting Designer should contact the Technical Manager for pool equipment list details.

Hirer will be provided with simple white lighting only, from available hung equipment, if only booking 2 hours for light focus and plotting sessions.



SOUND

Sound System	Meyer UPA-1P	6
	Tannoy i6T AW	16
	Nexo PS10	6
	Nexo PS8	4
	Nexo LS500	2
	Nexo LS2000 sub low	2
Main Control Console	Midas H1000	1
	Mics	20
	Stereo inputs	4
	Groups	10
	Aux	10
	Matrix	8
	Stereo output	1
Stage Monitoring	Apogee SSM	4
	EV FM 1502 for foldback	2
Microphone tie line	Tie line boxes at stage left, stage right, stage front, and rear auditorium, each had 16 tie lines	
Microphones	EV RE 16	7
	Beyer M 160 N	2
	Shure Beta 57	6
	Shure Beta 58	6
	Shure SM57	2
	Shure SM58	1
	AKG C562BL	1
	AKG D 310	2
	AKG CKI with C 460 B	4
	Neumann KM184	2
	Sennheiser UHF wireless mic (EW 500) <i>(extra charges incurred)</i>	6
	Including: Handheld : SKM 500	3
	Bodypack: SK 500w/ME2/ME3 cap	6
	(Maximum 6 wireless mics can be used)	
	Accessory Electronics (Pre-aligned, not loose equipment)	BSS DPR 402 compressor limiter
Klark Ternik DN 3600 digital equalizer		1
Klark Ternik DN 3601 digital slave equalizer		1
Roland SN550 digital noise eliminator		2
Yamaha Rev 5 effect processor		1
T.C. Electronic M.1 Duel effect signal processor		1
Shure P4800 System Processor		1
Tape recorder	Tascam 122 MKIII	2
Mini-Disc recorder	Sony MDS B5	2
	Sony MDS E12	1
CD Player	Denon DN-C630	1
DAT Recorder	Sony PCM-2800	2

VIDEO FACILITIES

LCD Projector As required from pool stock

Equipment available does vary slightly according to repair, maintenance, etc. Check with Technical Manager for any changes. Productions with a Sound Designer should contact the Technical Manager for specialist pool equipment details and list.



POOLED SOUND EQUIPMENT LIST
for Productions with a Sound Designer

Audio Console

A&H	WZ 14:4:2: 14 inputs, 4 groups, and 1 stereo output	1
DDA	CS3 : with 16 inputs, 4 groups, 6 aux, a stereo output	1
Midas	XL200 : 28 mono 4 stereo inputs, 8 aux, 8 groups, 8 matrix outputs	1
Midas	XL88 : matrix mixer with 8 inputs/outputs	1
Yamaha	O2R digital mixing console	1

Speaker

Altec	M101N	2
Bose	102	1
Bose	802 with JBL 6200 power amplifier	2
EV	FM 1502	2
EV	SM 1502	2
Meyer	CQ2	2
Meyer	MSL 2A	4
Meyer	UPA-2P	2
Meyer	UPM-2P	8

Microphone

AKG	C411	1
AKG	C414	2
AKG	C419	6
AKG	CK5 Capsule	5
AKG	CK62 Capsule	19
AKG	CK8 Capsule with C451	5
Anchor	LM 618	1
Audio Technica	ATM 25	2
B & K	4009	2
Crown	PZM30R	3
Crown	PCC160	15
Crown	PCC200	5
Neumann	RSM191	1
Neumann	U87A	2
Schoeps	MK41g + CMC 5U pre amp.	2
Sennheiser	521	4
Shure	Beta 91	2
Shure	Beta 87C	2
Shure	SM58 with switch	5
Sony	ECM77B	2

LCD Projector

Hitachi CP – X1250	1
--------------------	---

CD player

Marantz	PMD 321	1
Tascam	401	1
Tascam	701	3

DAT recorder

Tascam	DA30	1
--------	------	---

DVD

Philips	DVD 703	2
---------	---------	---

MD recorder

Denon	995R	1
Sony	MDS B3	4



<u>LD</u>		
Sony	MDP A660K laser disc player	2
<u>Open-reel</u>		
Otari	5050II 2 tracks open-reel tape recorder	4
Otari	5050II 4 tracks open-reel tape recorder	1
<u>Processor</u>		
Klark Teknik	DN 330 preset graphic EQ	4
Klark Teknik	DN 3600 programmable graphic EQ	2
Klark Teknik	DN 3601 programmable graphic EQ (slave)	3
Klark Teknik	DN 7204 digital delay line	1
dbx	1046 Quad compressor / limiter	1
dbx	160A 1 channel compressor	1
dbx	166 2 channels compressor	1
dbx	2231 2 channels equalizer / limiter	2
Meyer	CP10 2 channels parametric equalizer	2
Meyer	CP10S 2 channels parametric equalizer	3
Roland	SN550 digital noise eliminator	1
<u>Misc</u>		
Anchor	LK 4500B-TP admiral lectern	1
SCV	Active splitter with 16 inputs and 48 outputs	1
Rane	6 channels headphone amplifier	2
<u>Wireless</u>		
Sennheiser	SK2012-TV with MKE 2	2
Sennheiser	SKP 500 plug on transmitter	4
<u>Video TV</u>		
JVC	AV10TE 10" PAL system TV monitor	4
JVC	AV14TE 14" Multi system TV monitor	2
JVC	AVK21KH 21" Multi system TV monitor	2
National	TC2687 TV monitor	1
Panasonic	TC33GF85H 33" Multi system TV monitor	2
Panasonic	TCW 21 color TV with video cassette player	2
<u>VCR</u>		
JVC	S5000EK Super VHS video cassette recorder	1
JVC	SR-S388E SVHS	1
Philips	VR255 video cassette recorder	2
Philips	VR999 Super VHS video cassette recorder	1
Sony	VP9000P U-matic video cassette player	1
Sony	VO7630 U-matic video cassette recorder	1

EQUIPMENT ON THIS LIST IS ALLOCATED ON A FIRST COME FIRST SERVED BASIS ON PRESENTATION OF A COMPLETED SOUND DESIGN.

DO NOT ASK TO RESERVE ALL PENDING DESIGN SUBMISSION - SUCH REQUESTS WILL NOT BE ENTERTAINED!

Equipment available does vary slightly according to repair, maintenance, etc. Check with Technical Manager for any changes.